


MATT
SERIES



BLACKBERRY
TILES P.L.

CERAMIC for LUXURY

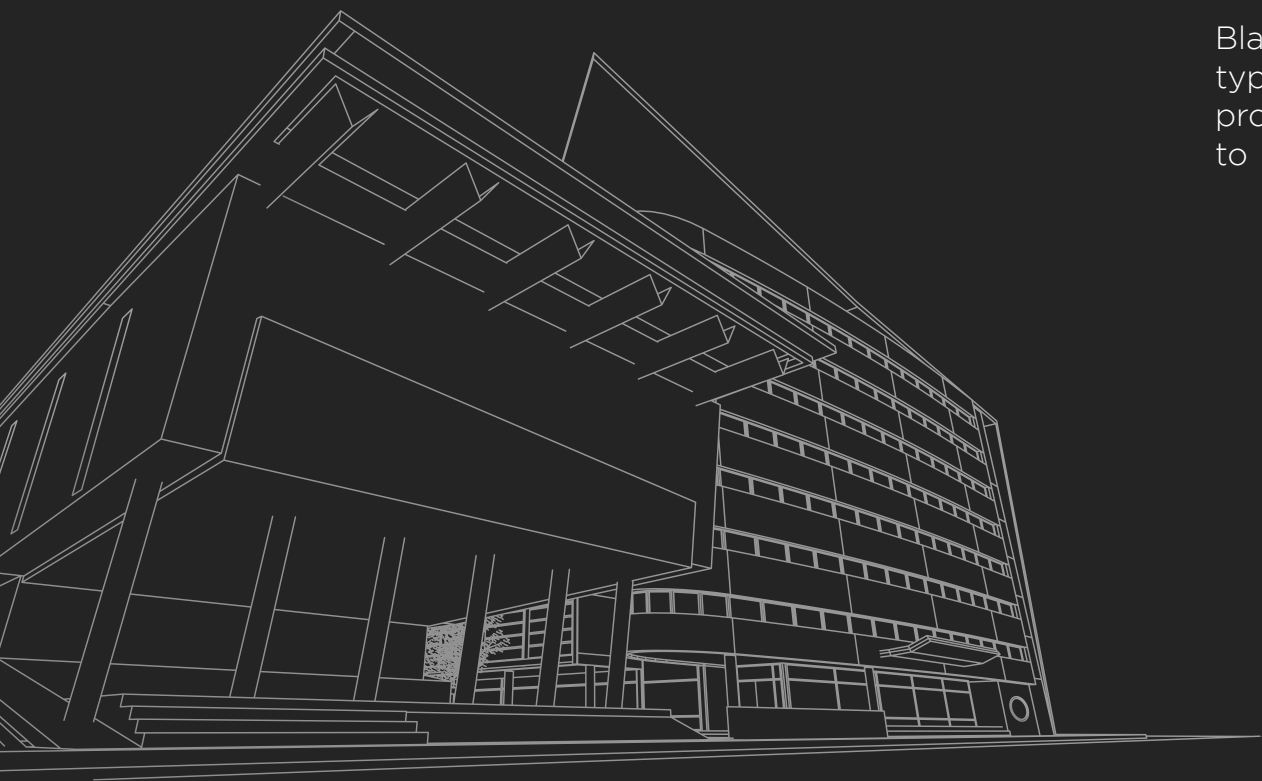
600 x
1200MM



www.blackberrytiles.com

Explore the Creative World of Ceramic Art

Blackberry is a uprising manufacturer and exporter of all type of ceramic tiles. We are rooted in India, creating products in-line with contemporary trends of architecture to deliver excellent experiences and lavish all across the world with our vogueish surfaces.



DISPLAY AREA
35K sq.ft

BUILDING AREA
65K sq. mtrs

PRODUCTION CAPACITY
25K box per day

LAND AREA
92K sq. mtrs



The alluring beauty of your surroundings

Inspired by the likeliness of natural marble, the
matt surface offers numerous options.

Application Areas



OFFICE
TABLE



STAIRCASE



WALL



SHELVES



LIVING
ROOM



FLOOR



www.blackberrytiles.com



EASY TO CLEAN

Matte surface tiles are exempt from frequent cleaning due to the best concealing of smudges and stains.

CHEMICAL RESISTANT

Our chemical-resistant tiles provide great durability against abrasion, anti-skid qualities for worker safety, and an attractive appearance.

SCRATCH RESISTANT

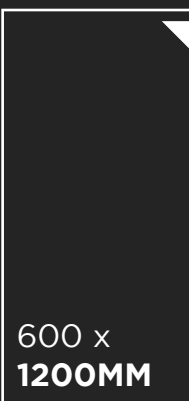
When it comes to the scratch resistance feature, it will win the top spot. A Matte surface prevents scratches.

FROST RESISTANT

Frost-resistant tiles are not damaged by extremely low temperatures. tile has the ability to endure freeze/thaw temperatures without significant harm.

STAIN RESISTANT

The most appealing aspect of matt finish tiles is that they require no maintenance.



600 x
1200MM

www.blackberrytiles.com



**PRESTON
BIANCO**



**PRESTON
GREY**



**PRESTON
CREMA**



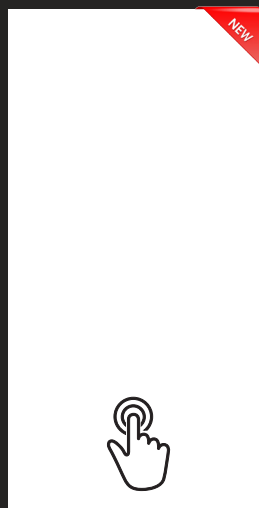
**PRESTON
BISQUE**



**PRESTON
MOCHA**

Finish:
Matt

Size:
600 x 1200MM



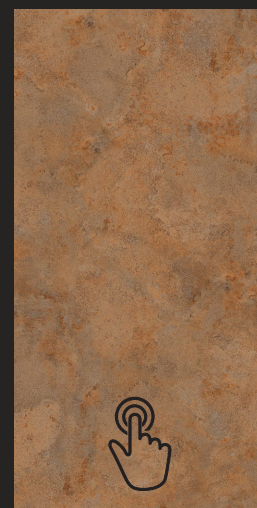
**SUPER WHITE
MATT**



12044M



12045M



12046M

WIDE
RANGE



600 x
1200MM


MATT
SERIES



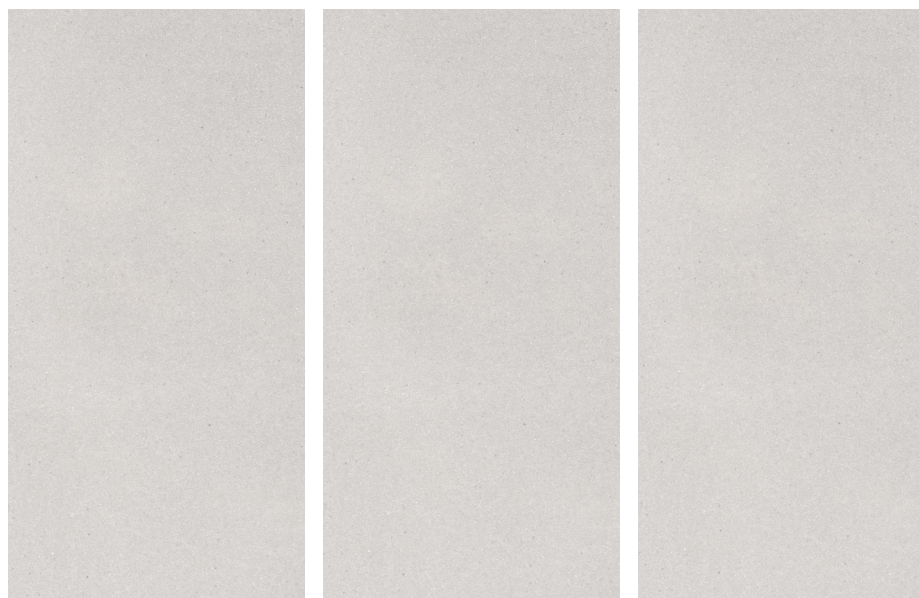
PRESTON BIANCO

NEW

Finish:
Matt

Size:
600 x 1200MM

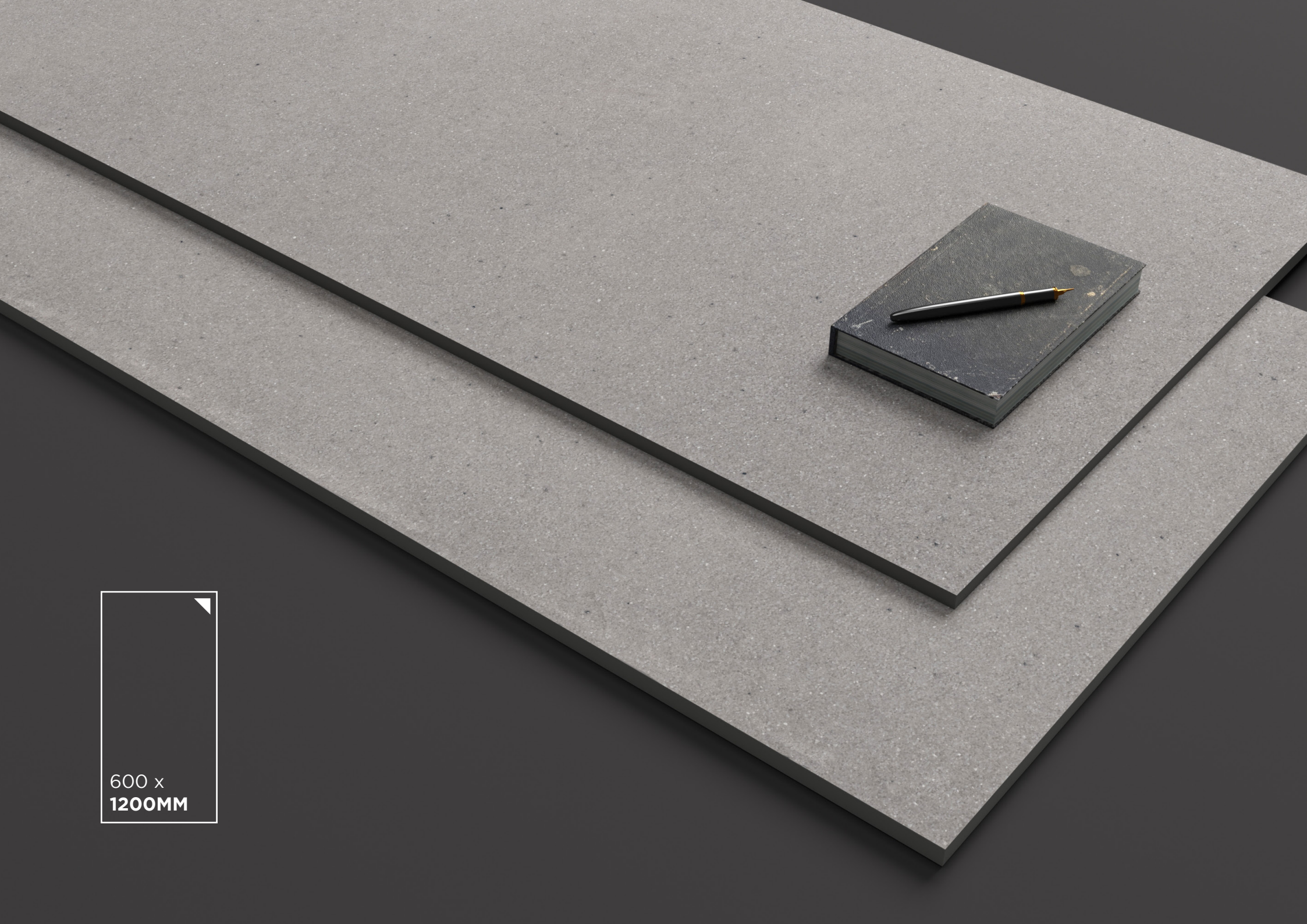
Random:
2 faces



Also available in:
Polished |

Glazed
Vitrified
Tiles





600 x
1200MM


MATT
SERIES



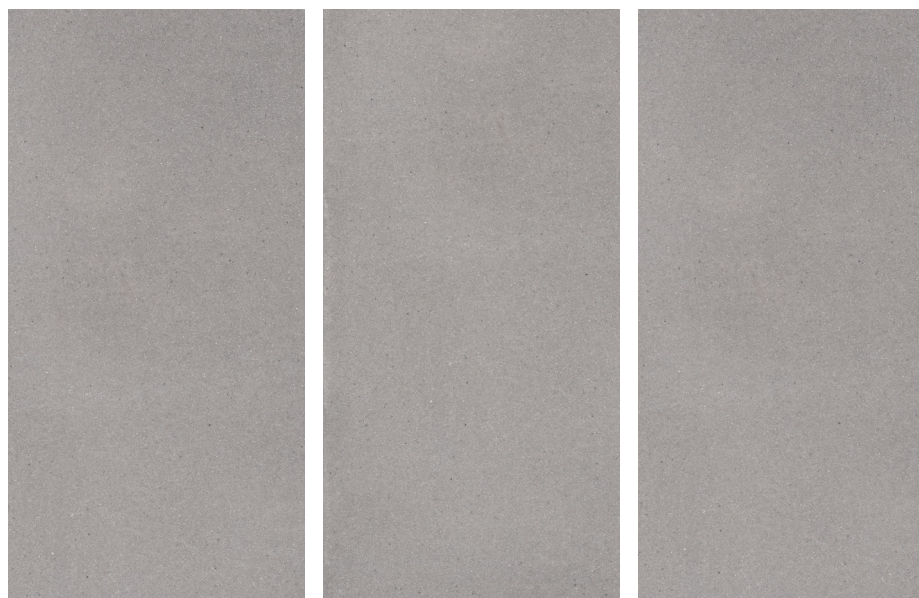
PRESTON GREY

NEW

Finish:
Matt

Size:
600 x 1200MM

Random:
2 faces



Also available in:
Polished |

Glazed
Vitrified
Tiles



600 x
1200MM


MATT
SERIES



PRESTON CREMA

NEW

Finish:
Matt

Size:
600 x 1200MM

Random:
2 faces



Also available in:
Polished |

Glazed
Vitrified
Tiles





600 x
1200MM


MATT
SERIES



PRESTON BISQUE

Finish:
Matt

Size:
600 x 1200MM

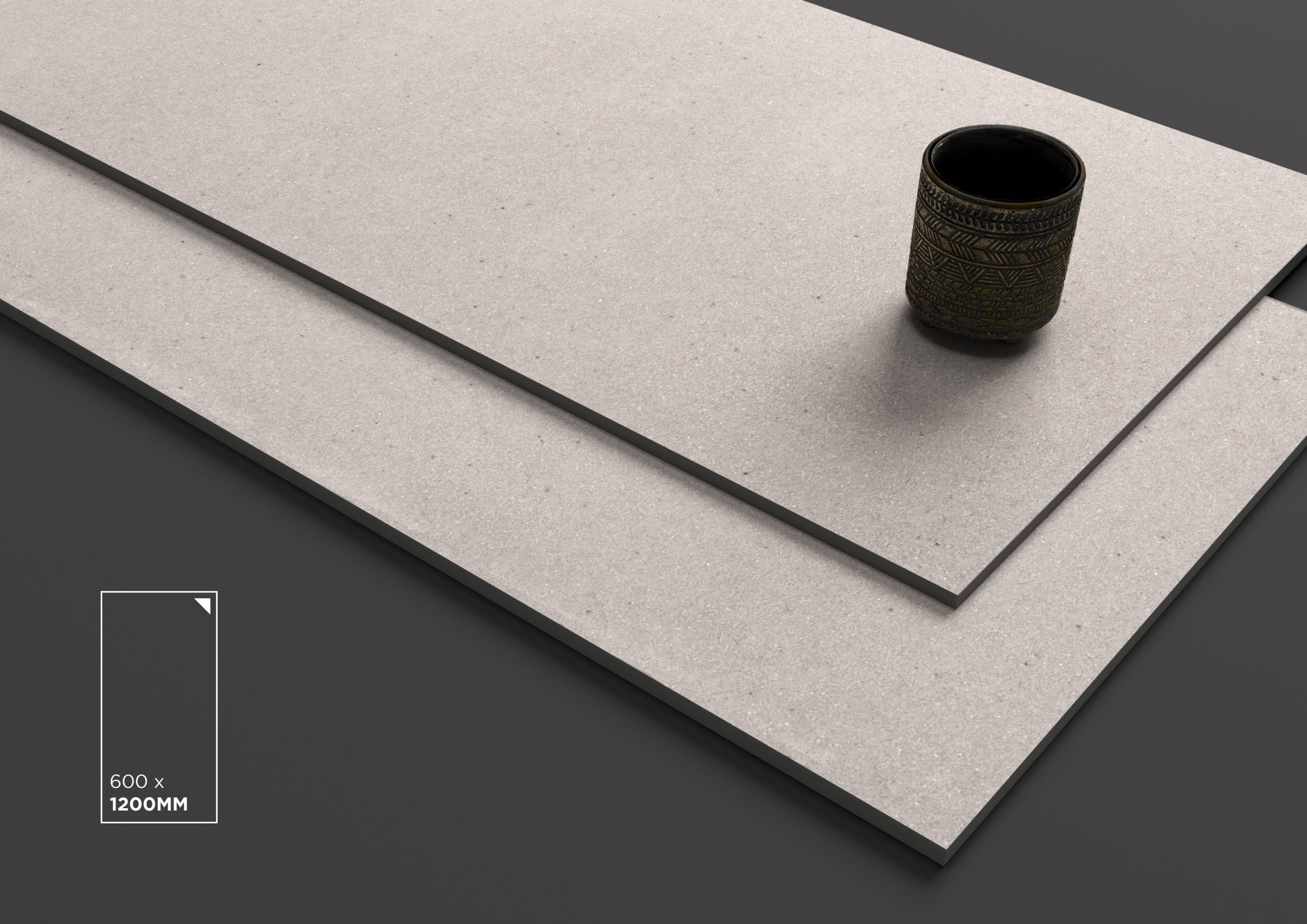
Random:
2 faces



Also available in:
Polished |

Glazed
Vitrified
Tiles





600 x
1200MM


MATT
SERIES



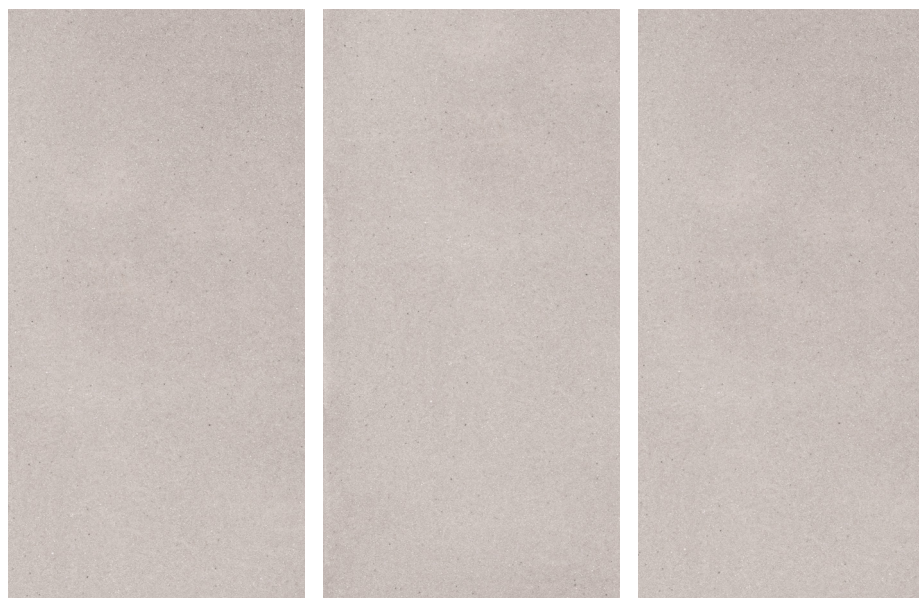
PRESTON MOCHA

NEW

Finish:
Matt

Size:
600 x 1200MM

Random:
2 faces



Also available in:
Polished |

Glazed
Vitrified
Tiles





600 x
1200MM


MATT
SERIES



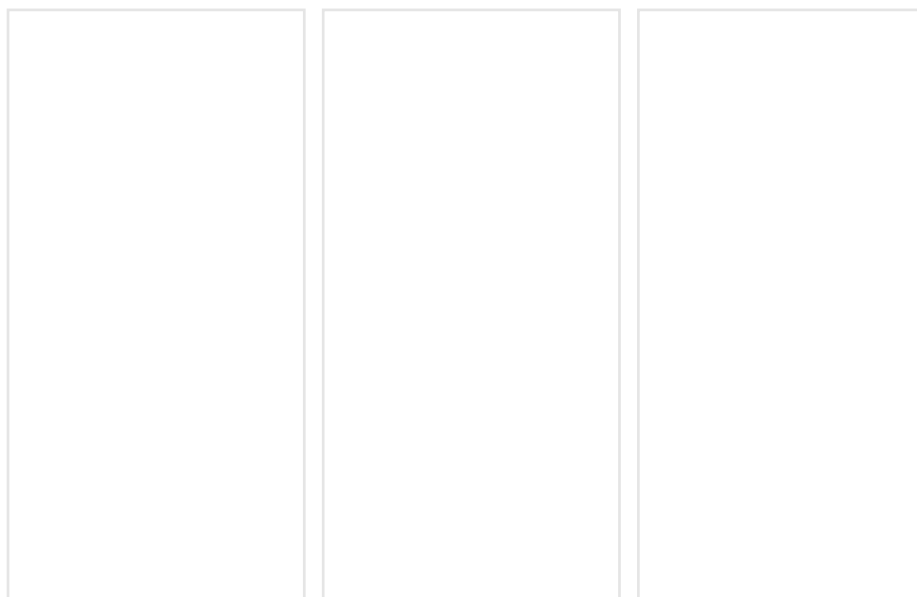
SUPER WHITE

NEW

Finish:
Matt

Size:
600 x 1200MM

Random:
1 face



Also available in:

Polished |
Highgloss |

Glazed
Vitrified
Tiles





600 x
1200MM


MATT
SERIES



12044M

Finish:
Matt

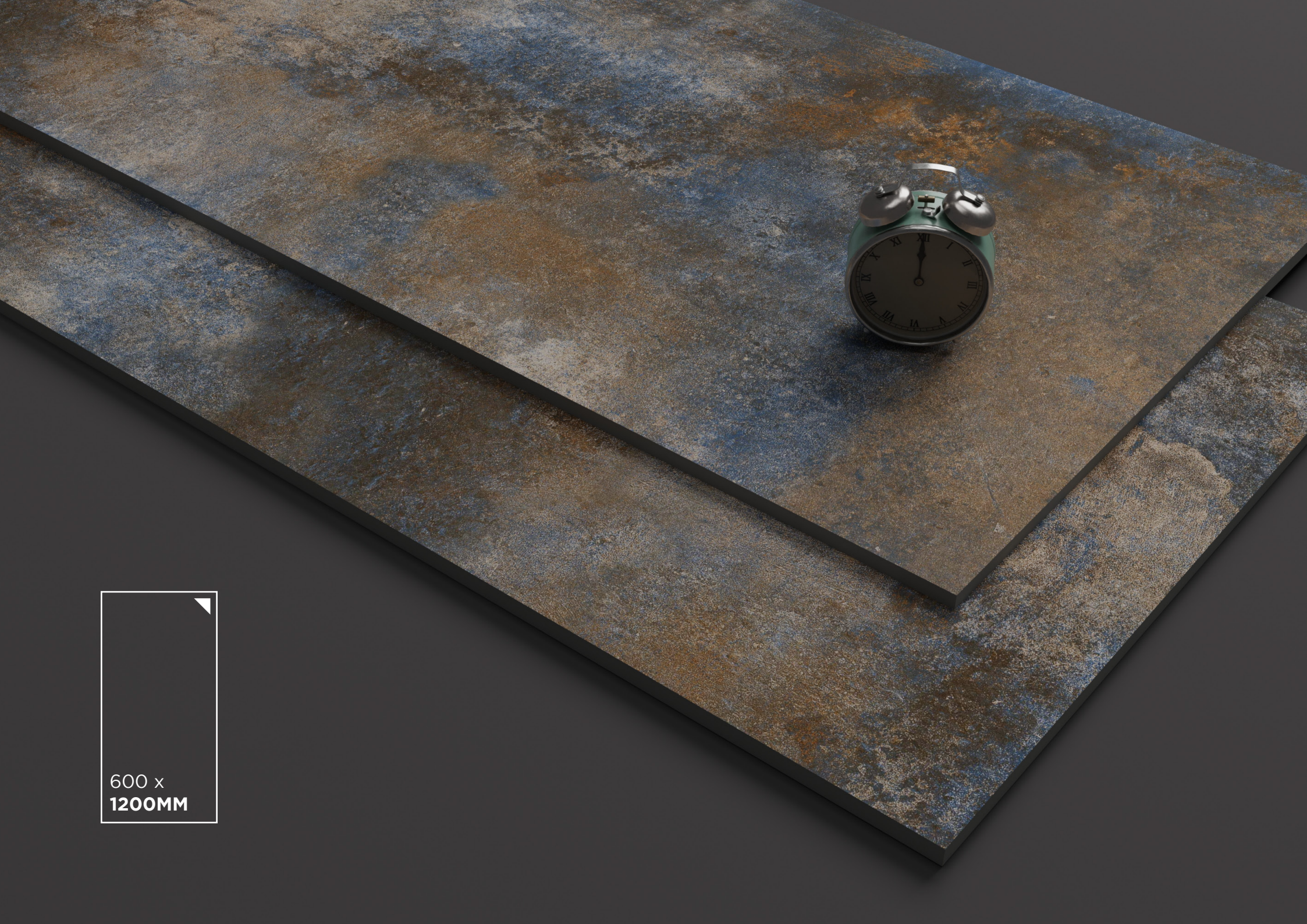
Size:
600 x 1200MM

Random:
2 faces



Glazed
Vitrified
Tiles





600 x
1200MM



MATT
SERIES

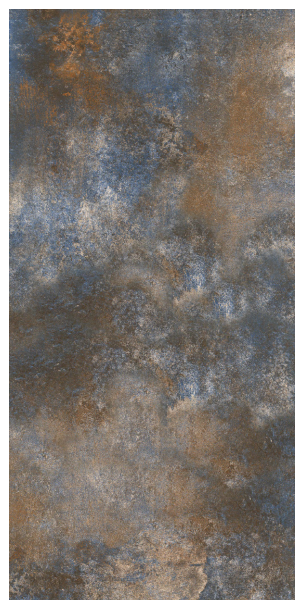
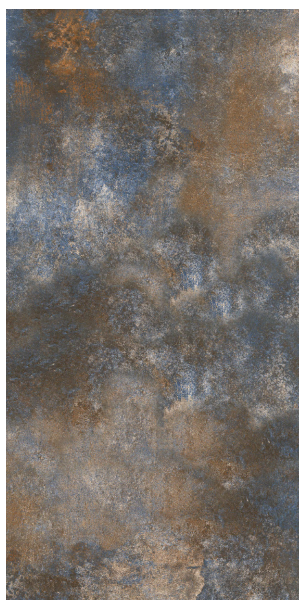


12045M

Finish:
Matt

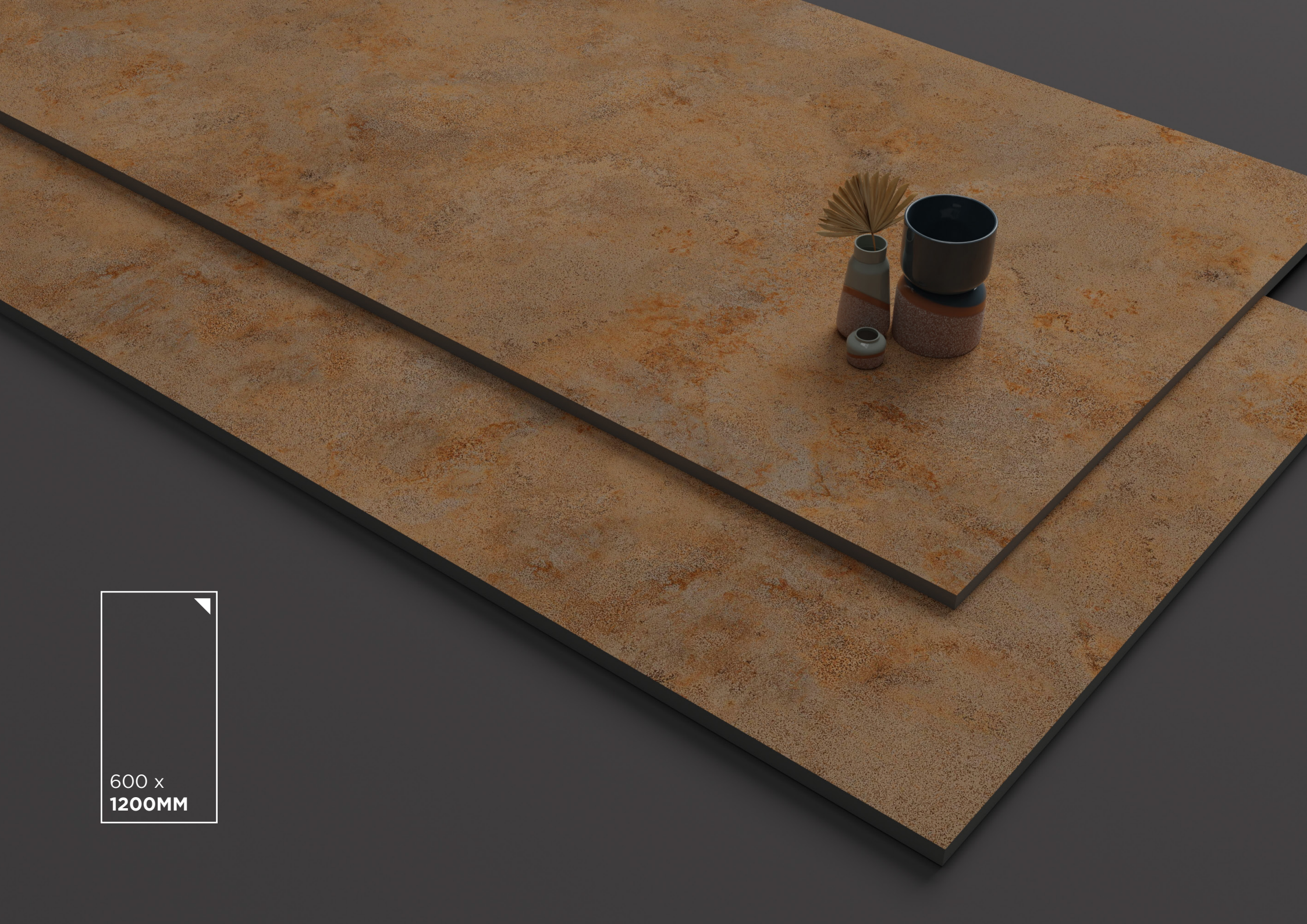
Size:
600 x 1200MM

Random:
2 faces



Glazed
Vitrified
Tiles





600 x
1200MM


MATT
SERIES

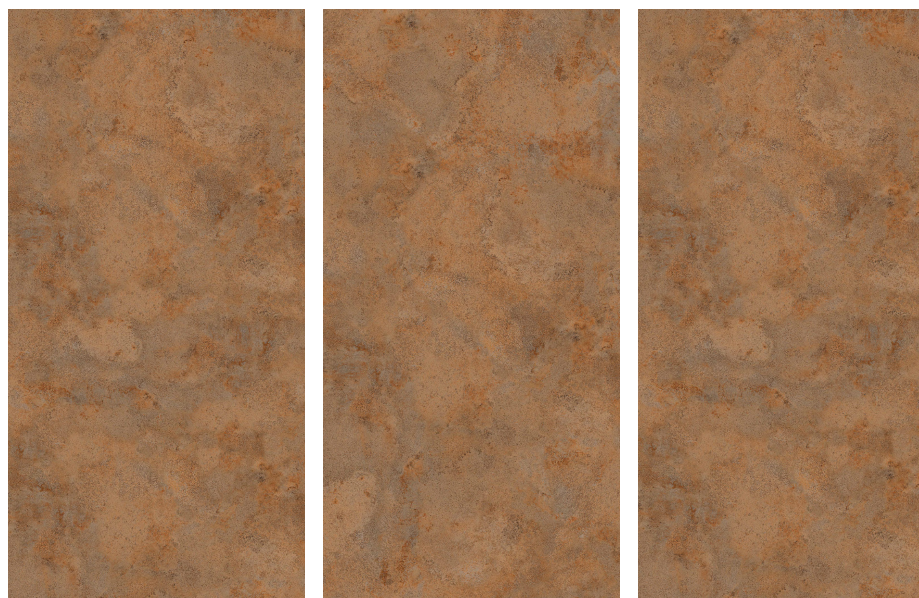


12046M

Finish:
Matt

Size:
600 x 1200MM

Random:
2 faces



Glazed
Vitrified
Tiles



Technical Specifications

Sr. No.	CHARACTERISTIC	STANDARD AS PER ISO 13006/EN 14411 GROUP BIA	MEAN VALUE OF BLACKBERRY POLISHED GVT	MEAN VALUE OF BLACKBERRY GVT	TEST METHOD
REGULATORY PROPERTIES					
	Deviation in Length & Width	± 0.50 %	± 0.10 %	± 0.10 %	ISO-10545-2
	Deviation in Thickness	± 5.00 %	± 4.00 %	± 4.00 %	ISO-10545-2
	Straightness of Sides	± 0.50 %	± 0.10 %	± 0.10 %	ISO-10545-2
	Rectangularity	± 0.50 %	± 0.10 %	± 0.10 %	ISO-10545-2
	Surface Flatness	±0. 50 %	± 0.20 %	± 0.20 %	ISO-10545-2
	Color Difference	Unaltered	No Change	No Change	ISO-10545-16
	Glossiness	As Per Mfg.	> 90 %	Min 4%	Glossometer 60°
	Surface Quality	Min. 95% Tiles should be free from visible defect	Conforms	Conforms	ISO-10545-2
STRUCTURAL PROPERTIES					
	Water Absorption %	≤0.50 %	E≤0.05 %	E≤0.05 %	ISO-10545-3
	Apparent Density	> 2.0 gm / cc	>2.10 gm/ cc	>2.10 gm/ cc	DIN 51082
MASSIVE MECHANICAL PROPERTIES					
	Flexural Modulus of Rupture	Min. 35N/ mm ²	Min. 40N/ mm ²	Min. 40N/ mm ²	ISO-10545-4
	Flexural Breaking Strength in N	Min. 1300 N	> 2000 N	> 2000 N	ISO-10545-4
	Impact Resistance	As Per Mfg.	Min. 0.55	Min. 0.55	ISO-10545-5
SURFACE MECHANICAL PROPERTIES					
	Surface Abrasion Resistance	As Per Mfg.	Min. Class 3	Min. Class 3	ISO-10545-7
	Moh's Hardness	As Per Mfg.	Min. 4	Min. 4	EN 101
THERMO HYDROMETRIC PROPERTIES					
	Frost Resistance	No Damage	No Damage	No Damage	ISO-10545-12
	Thermal Shock Resistance	No Damage	No Damage	No Damage	ISO-10545-9
	Moisture Expansion	Nil	Nil	Nil	ISO-10545-10
	Thermal Expansion (COE)	Max. 9.0 x 10 ⁻⁶	Max. 6.5 x 10 ⁻⁶	Max. 6.5 x 10 ⁻⁶	ISO-10545-8
	Crazing Resistance	As Per Mfg.	Min. 10 Cycle1	Min. 10 Cycle1	ISO-10545-11
CHEMICAL PROPERTIES					
	Resistance of House Hold Chem.	No Damage	No Damage*	No Damage*	ISO-10545-13
	Resistance to Staining	Resistant	No Damage	No Damage	ISO-10545-14
SAFETY PROPERTIES					
	Slip Resistance	As Per Mfg.	> 0.40	> 0.40	ISO-10545-17
	Fire Resistance	As Per Mfg.	Fire Proof	Fire Proof	N. A
	Lead & Cadmium given off by Glazed Tiles	As Per Mfg.	Dose Not Yield Pb & Cd	Dose Not Yield Pb & Cd	ISO-10545-15

*Glossiness 90% with Nani Technology in PGVT. *Except Hydrofluoric Acid it's compound

PACKING DETAILS

PRODUCT	NOMINAL SIZE	NO. OF TILES PER BOX	COVERAGE AREA / BOX
BLACKBERRY	600 x 1200 mm	2 PCS.	1.44 Sq. Mtr.

NOTES: Colour Shown are as accurate as the limitations of the printing process will allow. Prospective customers are advised to inspect a sample of the tile before ordering. Every effort has been made to ensure the accuracy of the information given. However, the company reserve the right of change the specification without prior notice. Sometime variation in shade or size being inherent to ceramic industry may occur. Before fixing, we advise you to follow the firing instructions in the cartons of the tiles as no responsibility can be accepted by the company once the tiles have been fixed

GENERAL NOTE: Any Complaint must be brought to the company's notice within 10 days of purchase & before fixing of tiles.

MAINTENANCE GUIDELINES FOR GVT

STAINS (Created by)	SOLVENTS (turpentine, Acetone, Trichloroethy-Lene ETC.)	SODIUM HYPOCHLORITE (NaOCl)	ACIDS (Hydro-Chloric Acid)	ALKALI (Sodium Hydroxide Potassium Hydroxide)
Beverages Beer				✓
Juices		✓		✓
Cola				✓
Coffee				✓
Tea	✓	✓		
Ink Ball / Felt Pen	✓			
Liquid Ink	✓		✓	
Marker Ink	✓			
Miscellaneous Cement			✓	
Tar	✓			
Calcar			✓	
Edible Oil	✓			
Cigarette Glue	✓		✓	✓
Ice Cream				✓
Paints	✓		✓	
Resins	✓			
Rust			✓	
Blood				✓

TILES FIXING INSTRUCTIONS

1. Plaster the surface of the floor where the tiles will be laid with smooth finish and complete the plastering and curing at least two weeks prior to laying.
2. Before fixing BLACKBERRY tiles, lay them out in the desired pattern and make sure that they give an acceptable blend of colour. Please note that certain amount of shade variation is inherent in the manufacture of fully Vitrified ceramic tiles. THE COMPANY WILL BEAR NO LIABILITY AFTER THE TILES ARE FIXED. 3. The company bears no responsibility towards the tiles exposed to any outside process like transfers, printing, firing etc. 4. For fixing BLACKBERRY tiles we recommend the use of tile fixing adhesives for best results. Also follow the fixing instructions provided along with the adhesives. 5. For fixing BLACKBERRY tiles on the floor, using sand and cement, follow the instructions given below: (a) Use cement and sand mortar in the ratio of 1:4. Add some water to create a consistent paste. (b) Once the mixing has completed do not add any further water and use the same within one hour. (c) Apply a 20-30 mm, layer of bedding material over an area of 1 square meter at a time on the surface of the area. Apply a fine slurry to the back of the tile to ensure proper and full bedding. Press gently for even adherence at the back of the tile. DO NOT USE AN IRON HAMMER OR SOME HEAVY MATERIAL TO PRESS THE TILE. 6. For fixing BLACKBERRY tiles on Dado, we recommend the use of tile fixing adhesive with proper troweling method for 100 per cent coverage behind the tiles and for peerless bonding. Please follow the manufacturer's instructions for the same. We do not recommend the use of sand and cement for fixing on Dado. 7. Make and lay out the tiles from the center of the area to be laid so that cut tiles, if any, will be on the outer edges towards the walls. 8. The work size which we try to maintain for better technical performance is 600mm x 600mm, 600mm x 1200mm on average. It is advisable to maintain a gap of 1 mm to 2 mm between every two tiles to allow for possible expansion as per BIS/EN tolerance norms. 9. Complete the laying process by pressing the cut BLACKBERRY tiles firmly into place along the walls/floors. 10. Allow 3-4 days for bed curing. After this period fill the joints with grouts. Usage of grout sealant is recommended for keeping the grout free of dust. 11. Fifteen minutes after finishing the grouting process, wipe off excess grout with a damp sponge and polish the tiles with a soft and dry cloth for a clean surface. The tiles can also be cleaned with a mild acid (However, Hydrofluoric acid and its derivatives should not be used). 12. Please note that the company does not accept any liability in case of problems arising out of non-adherence to these fixing instructions.

Kindly look for the arrow (⇒) on the back of the tile and follow the laying pattern as shown in Pic-1:



Nothing in these instructions is a Substitute for Good Workmanship and Supervision

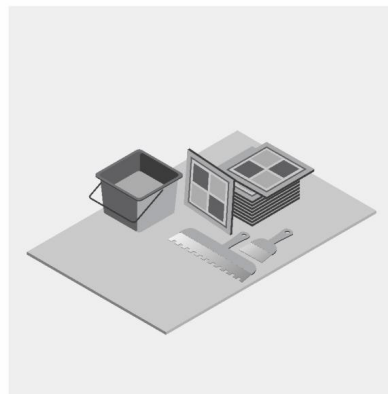


Tiles Fixing Instructions

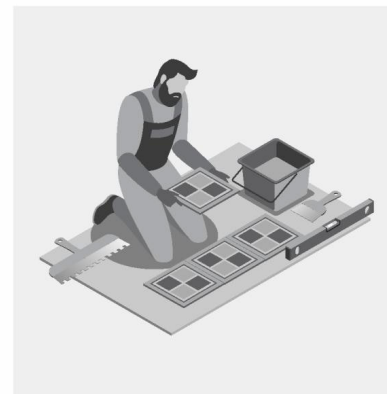
1. All the tiles must be checked prior to fixing for quality, batch no. and choice.
2. Plaster the surface of the floor to be tiled and allow curing atleast two weeks before tiling.
3. While fixing pick tiles from various boxes alternatively, lay them in the desired patterns and make sure that they give an acceptable blend of colour and design. Please note that shade variation is inherent in manufacturing tiles.
4. For fixing tiles we recommend to use the fixing adhesives or equivalent product for the best result.
5. For fixing tiles in floor using conventional method, we suggest the following laying instruction:
 - A: Use cement and sand mortar in the ratio 1:4. Add water to create a consistent paste.
 - B: Apply 20-25MM of bedding materials over the floor area of 1.0 SQM at a time.
 - C: Apply a thin coat of the slurry on the back of the tile to ensure proper and full bedding. Press gently for even adherence of the tiles with surface.Do not use any heavy materials like iron or hammer to press tile.
- 6: For fixing the tools on Dado, we recommend the use of adhesive or equivalent materials.
- 7: Allow 3-4 days of bed curing after Laying tiles and later fill the joints with grout.
- 8: We recommend maintaining a joint gap of 1-2mm between the tiles to allow possible thermal expansion at later stage.
- 9: Please note that company will not accept any liability in case of any problems arising out of adherence of above fixing instructions.



Step-1
Surface Preparation



Step-2
Preparation of Subgrade



Step-3
Laying of tiles on the Surface



Step-4
Post Tiling Work

Tile Laying, maintenance & Recommendations



Cleaning after Laying

We suggest a good initial cleaning after the laying on the floor or wall, this is very important for removing residual grouting and the normal dirt coming from the building works.

We suggest the use of a cementitious descaler, that is a lightly acid product that doesn't emit fumes that are harmful for the user and that can attack joints. In case of material layed with epoxy or resinous grouting, we recommend to clean after laying with specific detergent.



Regular Maintenance

For a good cleaning of the floor we suggest the use of a natural detergent with a high cleaning power. In case of strong dirty and encrusted by the time, we recommend to consult the following scheme to find the perfect solution to every situation

Recommendations

Drying Process

Once the tiles have been grouted and any excess grout cleaned off, it is important to wait the stipulated time before using the tiled surface; in other words, any cleaning should wait until the tiled surface is completely dry. We recommend waiting 5 days before cleaning in readiness for full use.

Damage Prevention

Measures should also be taken to protect the newly tiled surface against mechanical or chemical damage resulting from subsequent work by other professionals or later installations. Damage can be prevented by covering the floor tiles with thick cardboard or similar material.

Protection from Liquid

The newly tiled surface must be protected from water and damp while the adhesive and grouting materials are maturing and hardening. This is particularly important in outside spaces and areas where there is a risk of freezing.

Cleaning Products

For the final cleaning of the tiled surface, the products used should be compatible with the chemical resistance of the tiles. Avoid solid detergents with abrasive particles and solutions containing hydrofluoric acid, which attacks the glaze and causes irreversible damage to the ceramic tile.

TYPE OF DIRT

Cement, Kalkstein, metal tracer, rust
Residuals, stains and halos of epoxi joints
Grease, tire marks, colours, marker, etc.
Grafitis

PRODUCT

Cementitious descaler
Epoxi descaler
Non soap degrease
Acetone and antigraffiti star

Size-able Showcase



The intricacies of size and design affect the whole outlook and we understand your concern about the size specifications quite well. Also, the design that's uniform and long-lasting has a greater impact on your investment. Choose Blackberry Tiles and you need not worry about anything. Just let us know what you need

1200 x 2400mm	GVT
800 x 2400mm(15mm)*	GVT
1200 x 1800mm*	GVT
800 x 1600mm	GVT
260 x 1600mm	WOODEN GVT
600 x 1200mm	GVT
195 x 1200mm	WOODEN GVT
600 x 600mm	GVT
600 x 900mm(16mm)*	OUTDOOR GVT
600 x 600mm(16mm)*	OUTDOOR GVT
300 x 600mm	CERAMIC WALL TILES
300 x 300mm	CERAMIC WALL/FLOOR TILES



*upcoming



CERAMIC  LUXURY

BLACKBERRY TILES PVT. LTD.

Admin Office

Jetpar Pipli Road, Sapar, Morbi-363642. Gujarat - INDIA

Gvt Plant:

Morbi-Halvad Road, At. Unchi Mandal, Morbi-363641. Gujarat, India.

Customer Care No.: +91 90999 86724



Click for visit:
www.blackberrytiles.com

Super Made
in India 