

Glossy
SERIES



BLACKBERRY
TILES P.L.

CERAMIC for LUXURY

The Kitchen Art



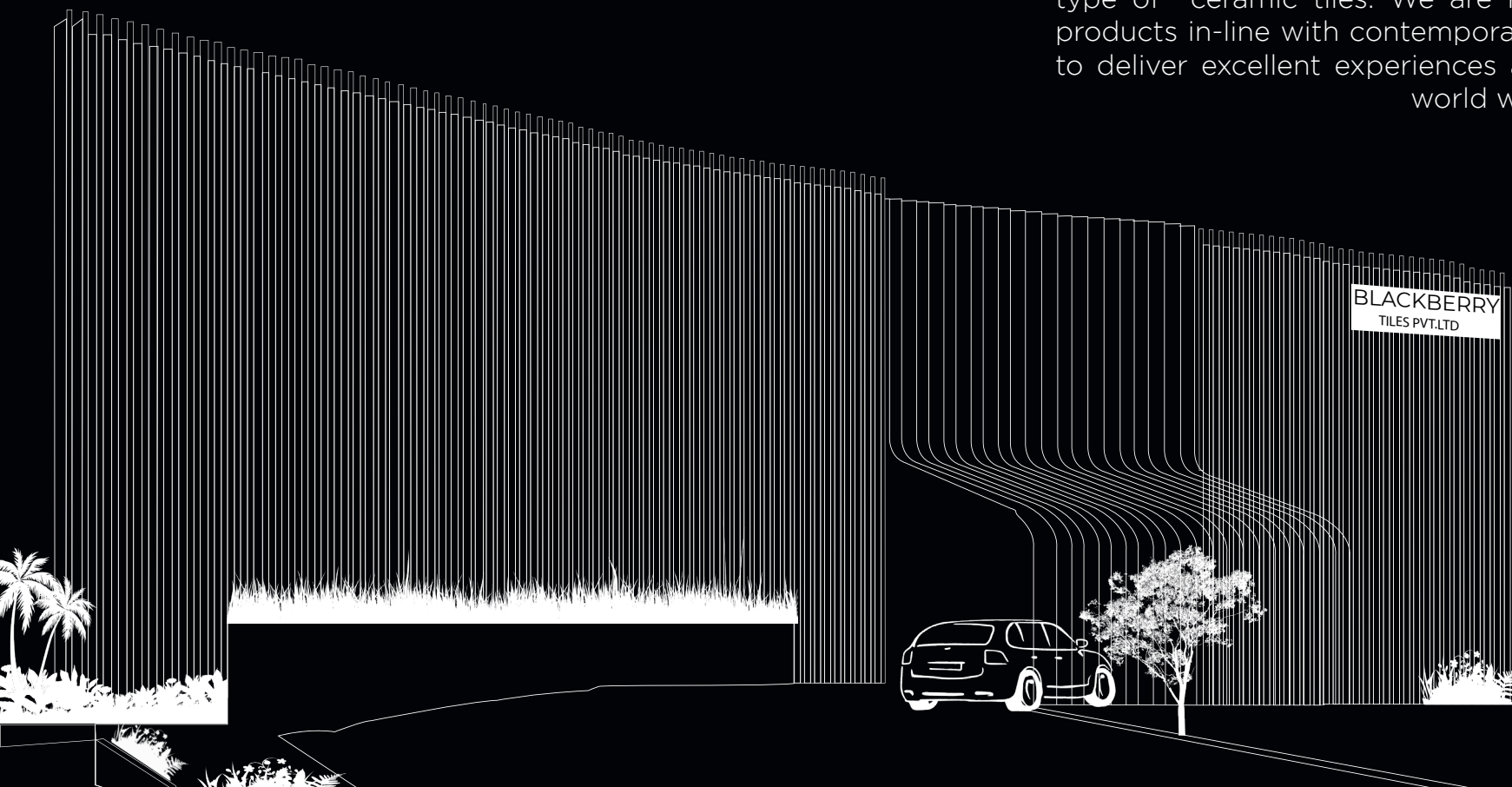
300 x
600MM



www.blackberrytiles.com

Explore the Creative World of Ceramic Art

Blackberry is a uprising manufacturer and exporter of all type of ceramic tiles. We are rooted in India, creating products in-line with contemporary trends of architecture to deliver excellent experiences and lavish all across the world with our vogueish surfaces.



DISPLAY AREA
35K sq.ft

PRODUCTION CAPACITY
25K box per day

BUILDING AREA
65K sq. mtrs

LAND AREA
92K sq. mtrs



EASY TO CLEAN

Matte surface tiles are exempt from frequent cleaning due to the best concealing of smudges and stains.

CHEMICAL RESISTANT

Our chemical-resistant tiles provide great durability against abrasion, anti-skid qualities for worker safety, and an attractive appearance.

SCRATCH RESISTANT

When it comes to the scratch resistance feature, it will win the top spot. A Matte surface prevents scratches.

FROST RESISTANT

Frost-resistant tiles are not damaged by extremely low temperatures. tile has the ability to endure freeze/thaw temperatures without significant harm.

STAIN RESISTANT

The most appealing aspect of matt finish tiles is that they require no maintenance.



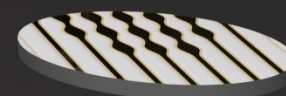
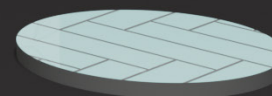
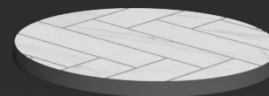
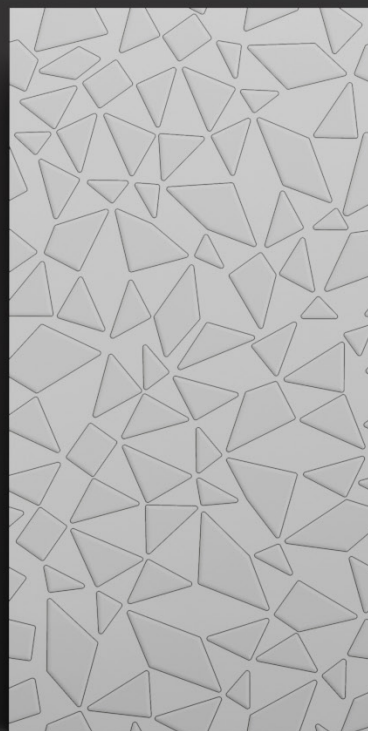
300 x
600MM

www.blackberrytiles.com



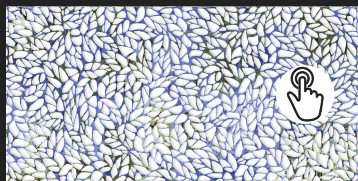
Masters of contemporary home styles

Inspired by the likeliness of natural marble,
the polished surface offers numerous options
and glitter your kitchen

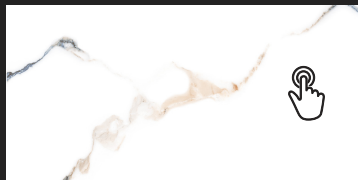




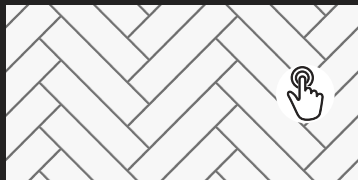
KICHT 1206



BRAZILIA
BLUE 1506



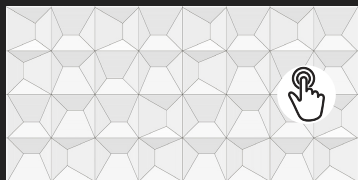
SATVARIO
BROWN



WONDER
COLOR 310



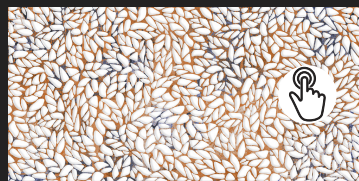
WONDER
WHITE 001



WONDER
WHITE 016



BLACK WHITE
1539



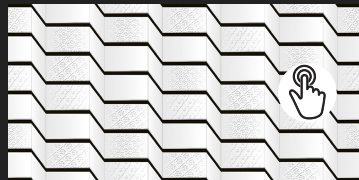
BRAZILIA
BLUE 1506



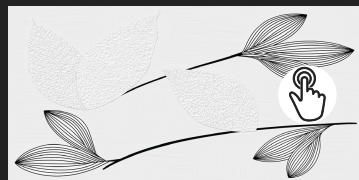
SATVARIO
FABER 1513



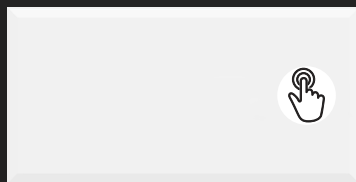
WONDER
COLOR 312



WONDER
WHITE 005



WONDER
WHITE 019



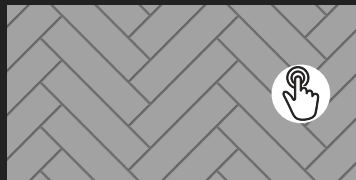
BLACKBERRY
1201



BRAZILIAN
1509



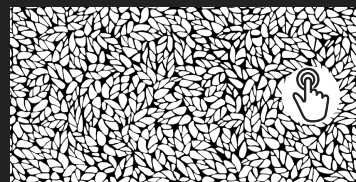
SR BL 2005



WONDER
COLOR 321



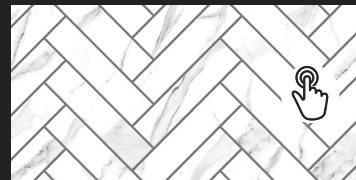
WONDER
WHITE 009



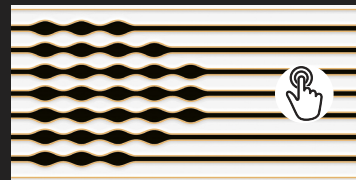
BRAZILIA
BLACK 1506



CLASSICO
IVORY



WONDER
COLOR 303

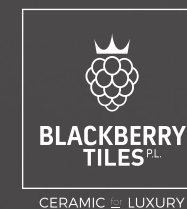


WONDER
COLOR 325

Finish:
Glossy

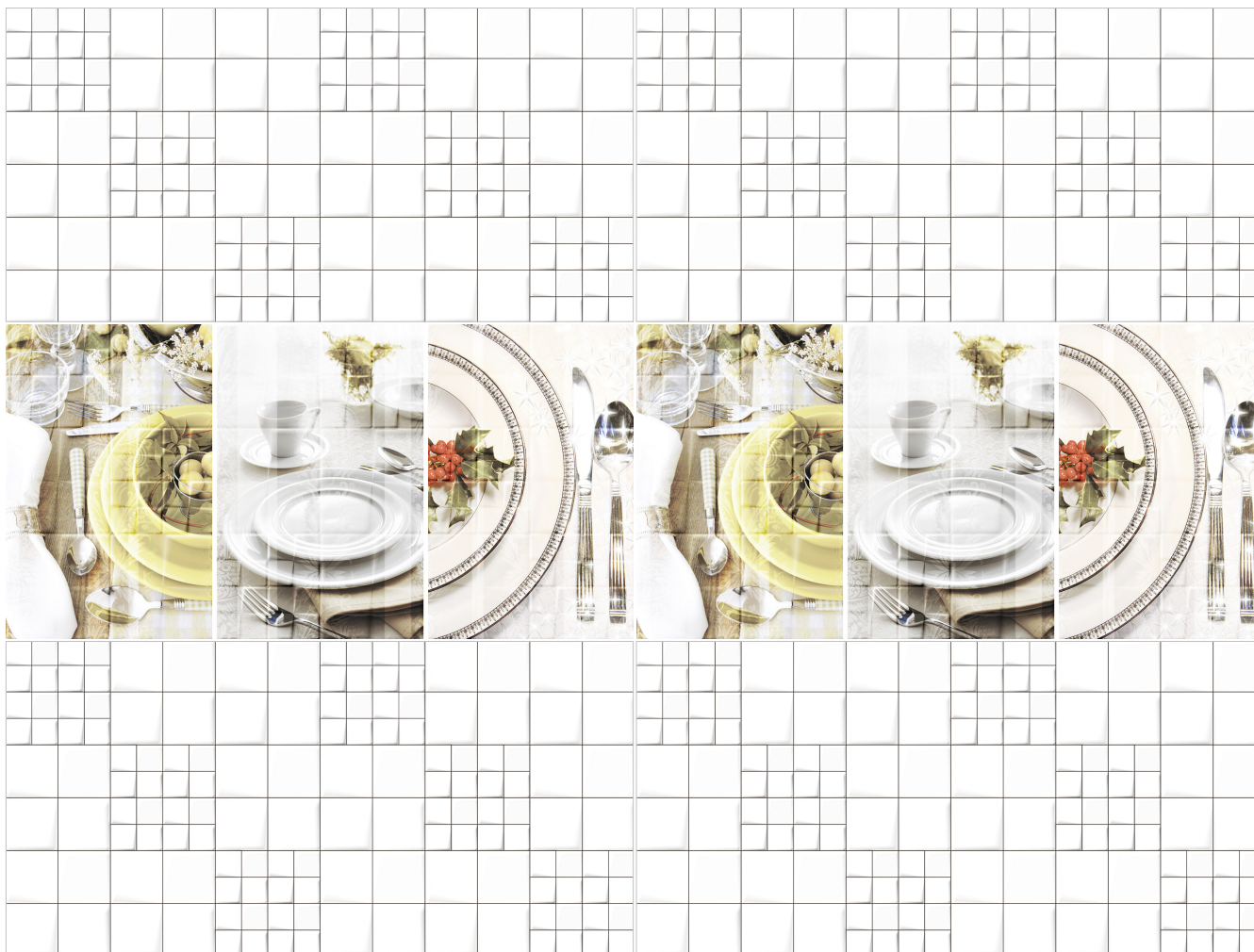
Size:
300 x 600MM

WIDE RANGE



Glossy
SERIES

300 x
600MM



BLACK WHITE 1206

Finish:
Glossy

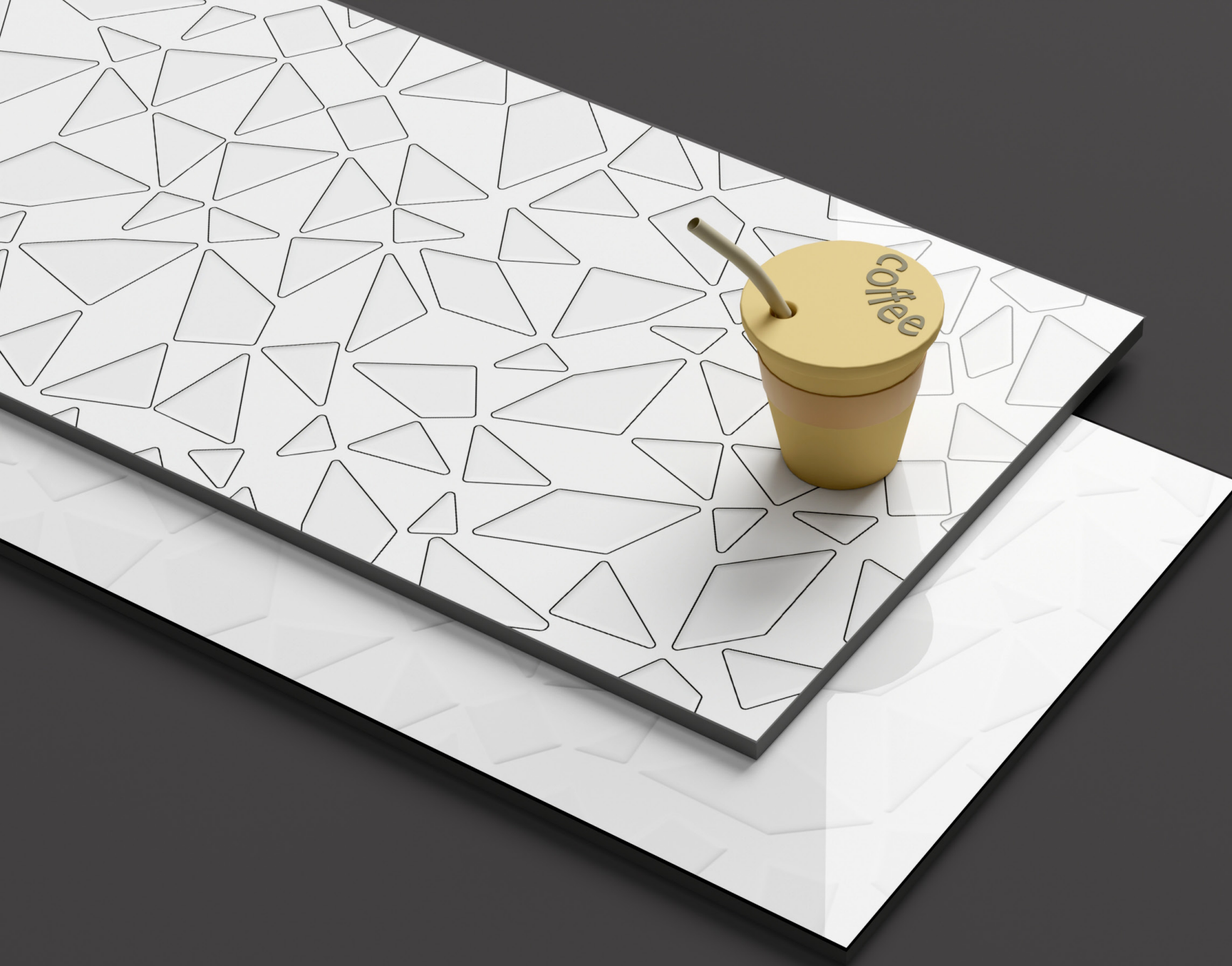
Size:
300 x 600MM

Random:
1 face

BLACK WHITE 1206 LT
KICHT 1206 HL

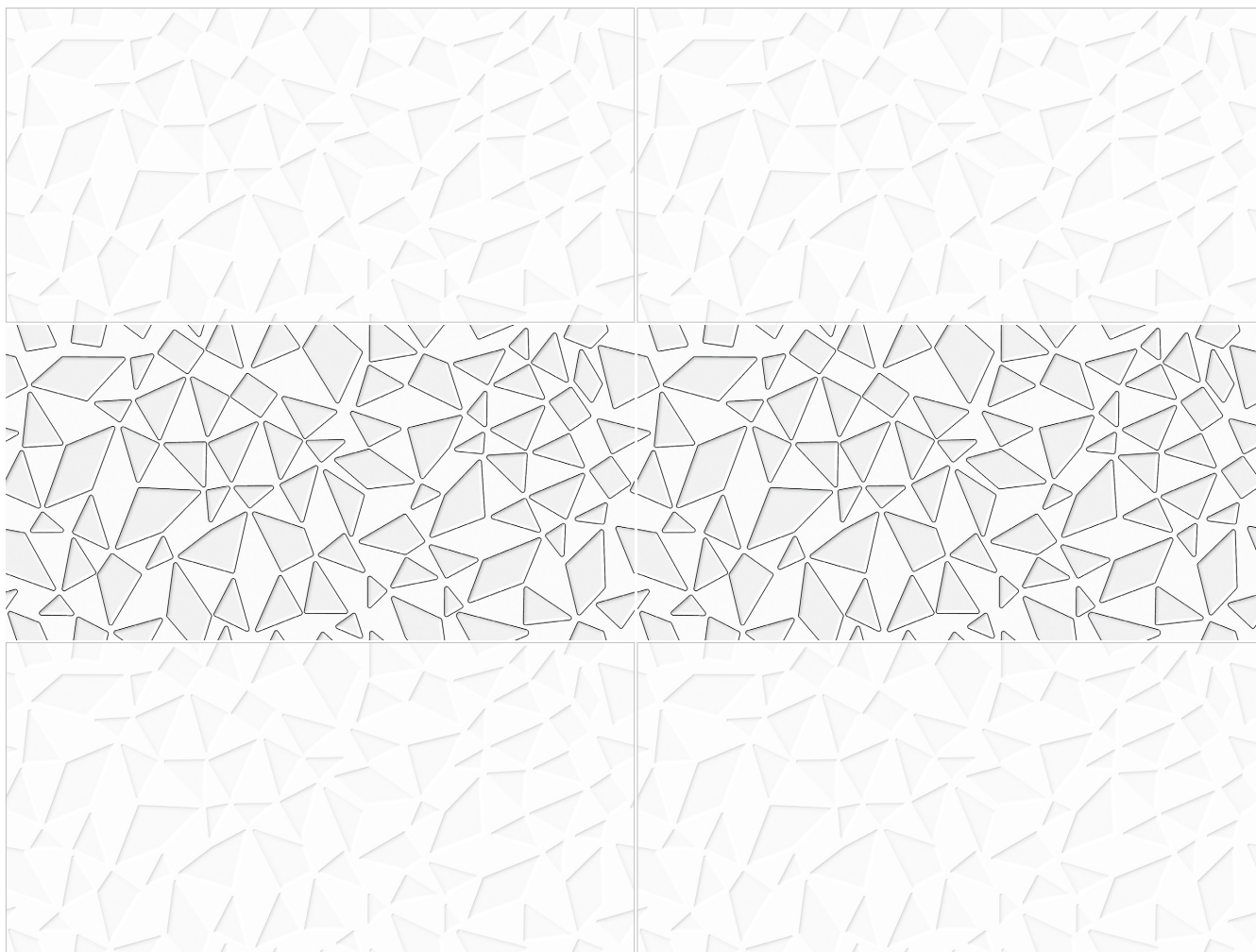
RANDOM





Glossy
SERIES

300 x
600MM



BLACK WHITE 1539

Finish:
Glossy

Size:
300 x 600MM

Random:
1 face

BLACKBERRY 1539
BLACK WHITE 1539

RANDOM

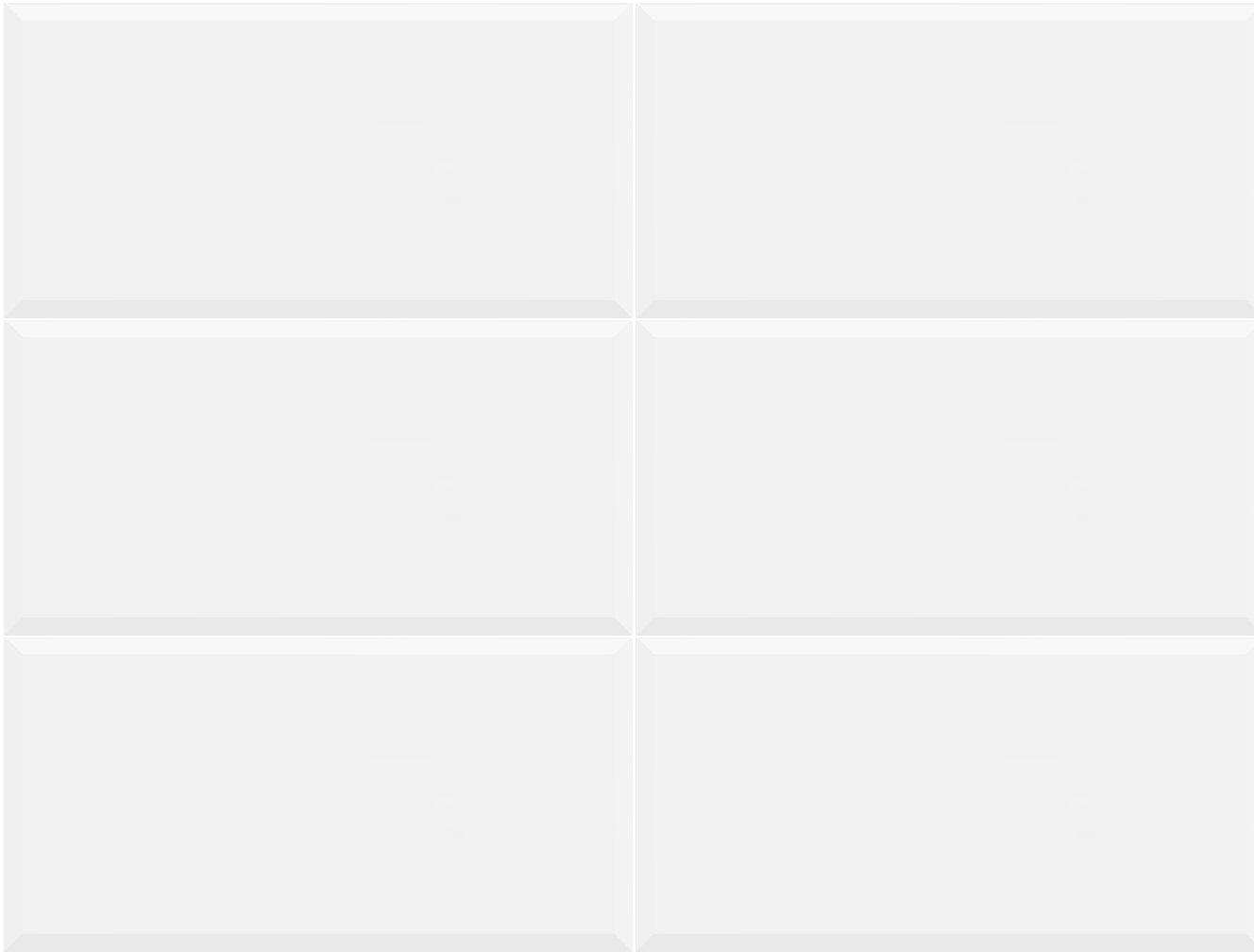




Glossy
SERIES



CERAMIC  LUXURY



BLACKBERRY 1201

RANDOM

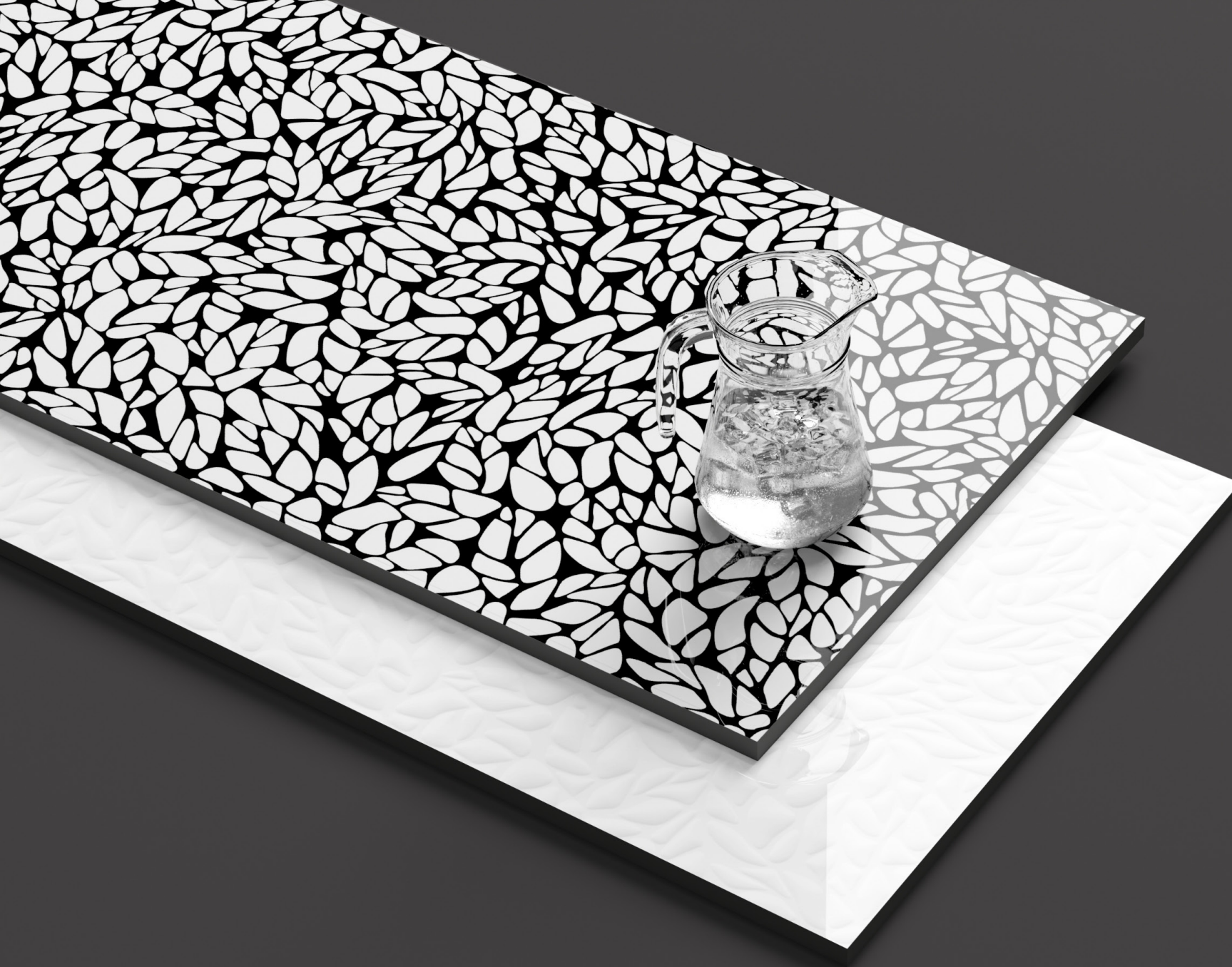
BLACKBERRY 1201

Finish:
Glossy

Size:
300 x 600MM

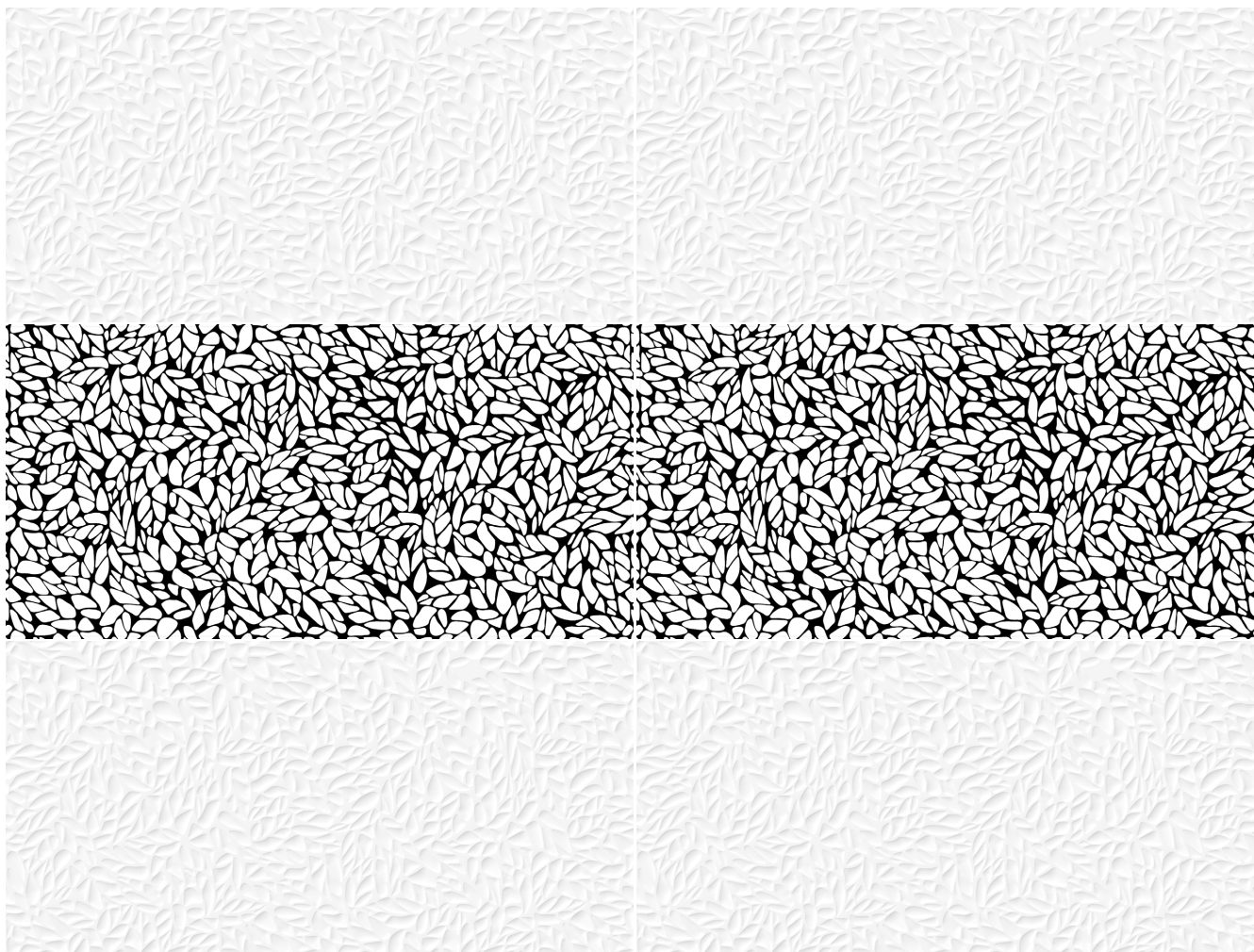
Random:
1 face





Glossy
SERIES

300 x
600MM



BRAZILIA BLACK 1506

Finish:
Glossy

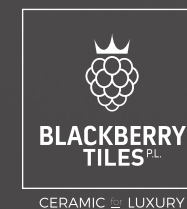
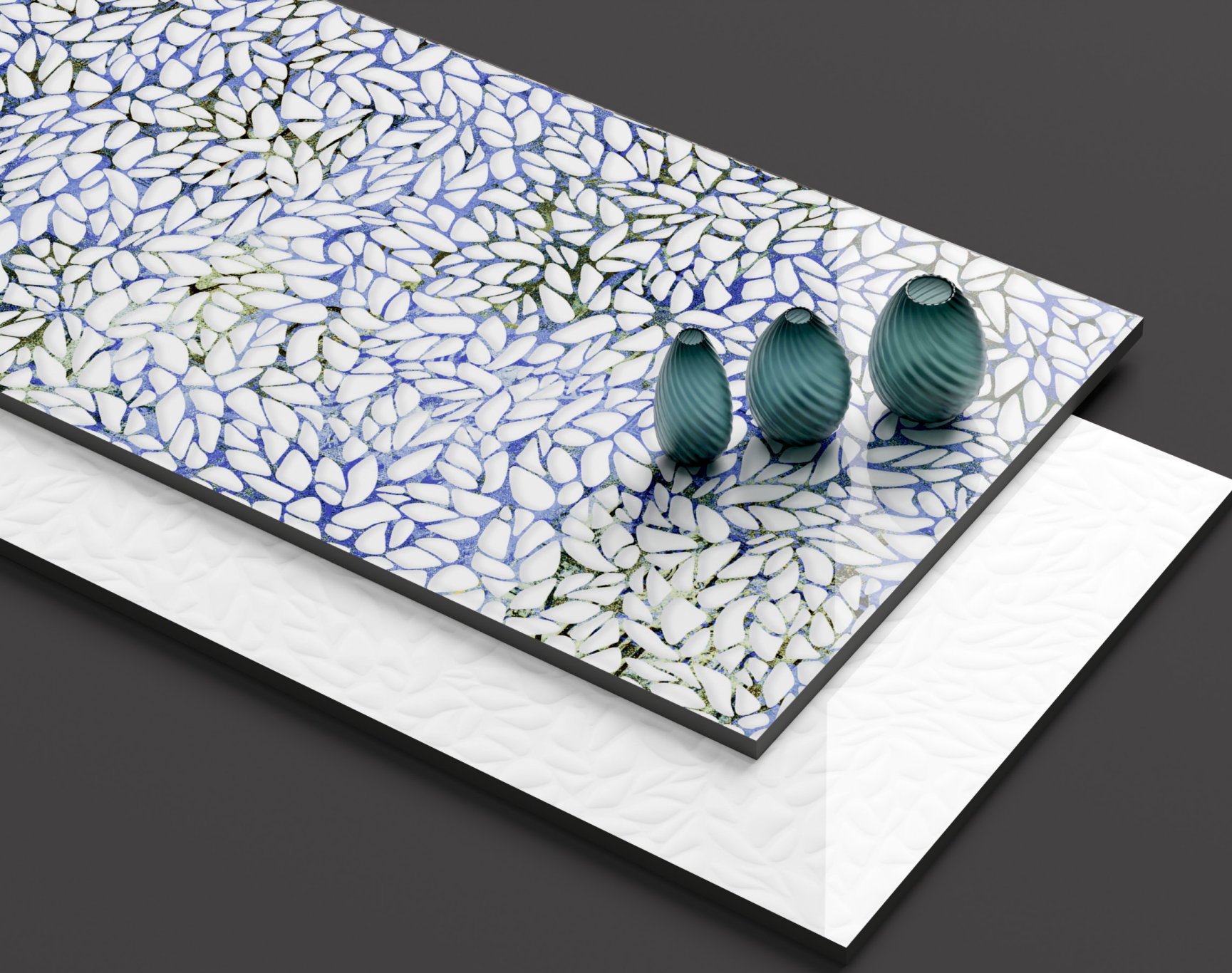
Size:
300 x 600MM

Random:
1 face

BRAZILIA 1506
BRAZILIA BLACK 1506

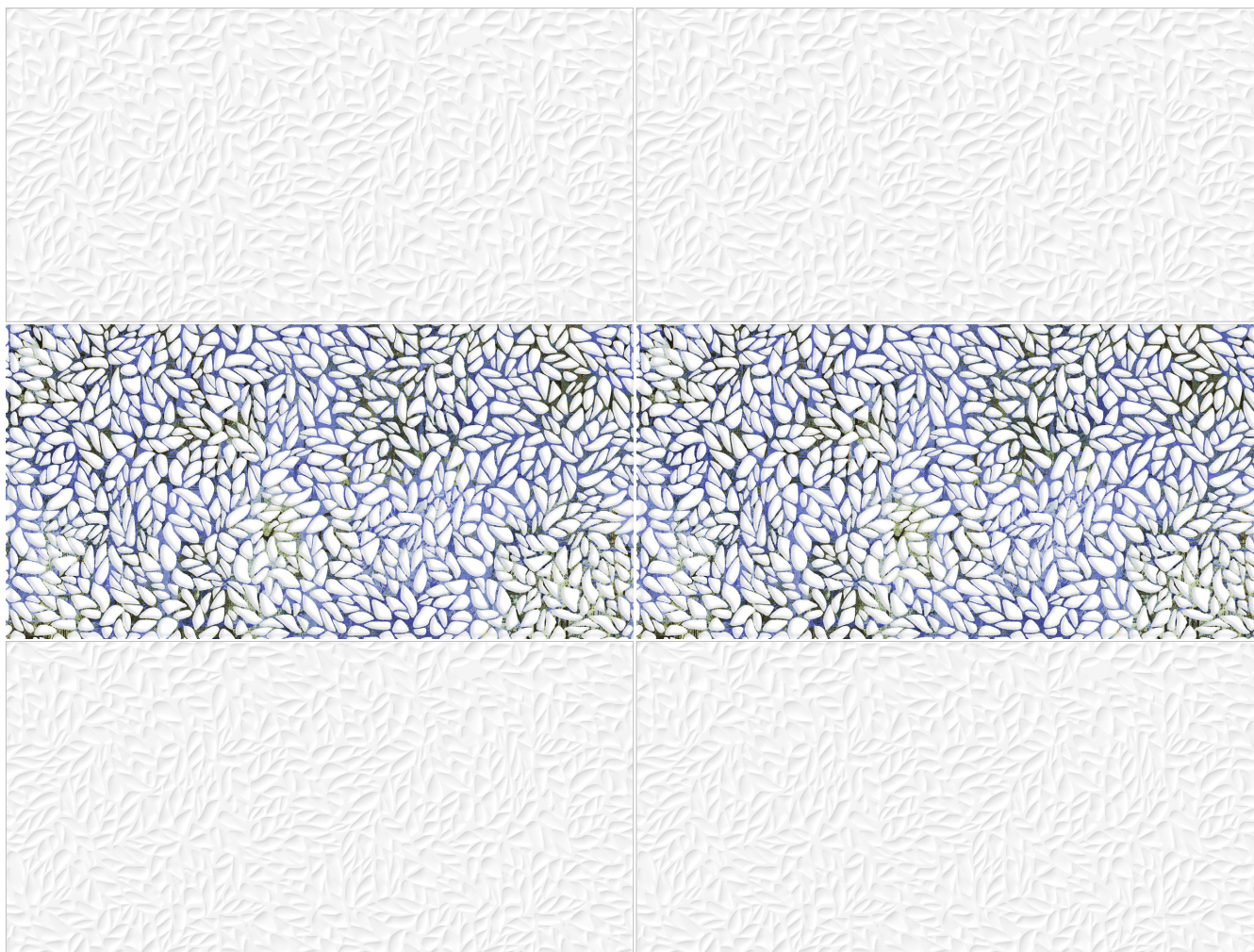
RANDOM





Glossy
SERIES

300 x
600MM



BRAZILIA BLUE 1506

Finish:
Glossy

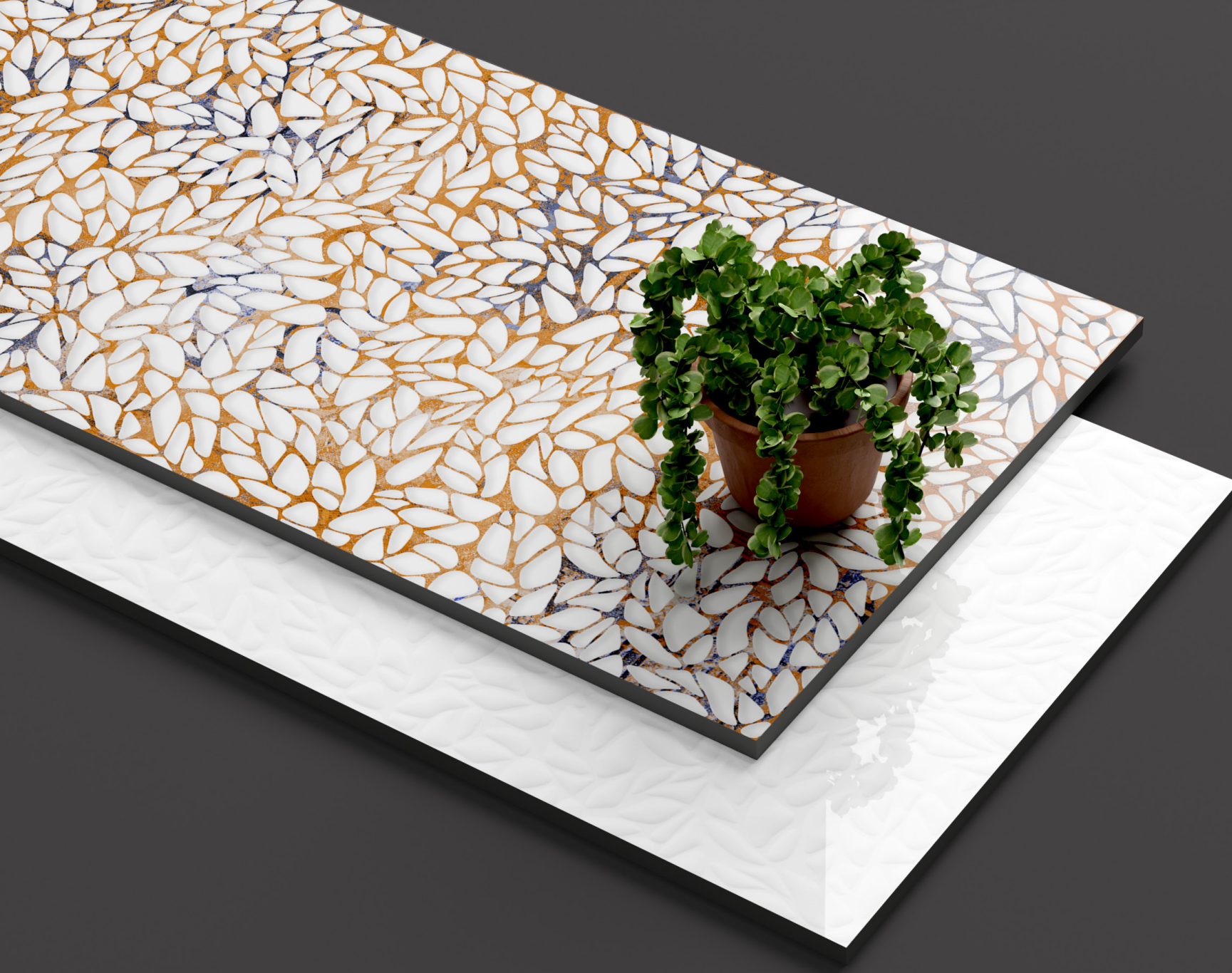
Size:
300 x 600MM

Random:
1 face

BRAZILIA 1506
BRAZILIA BLUE 1506

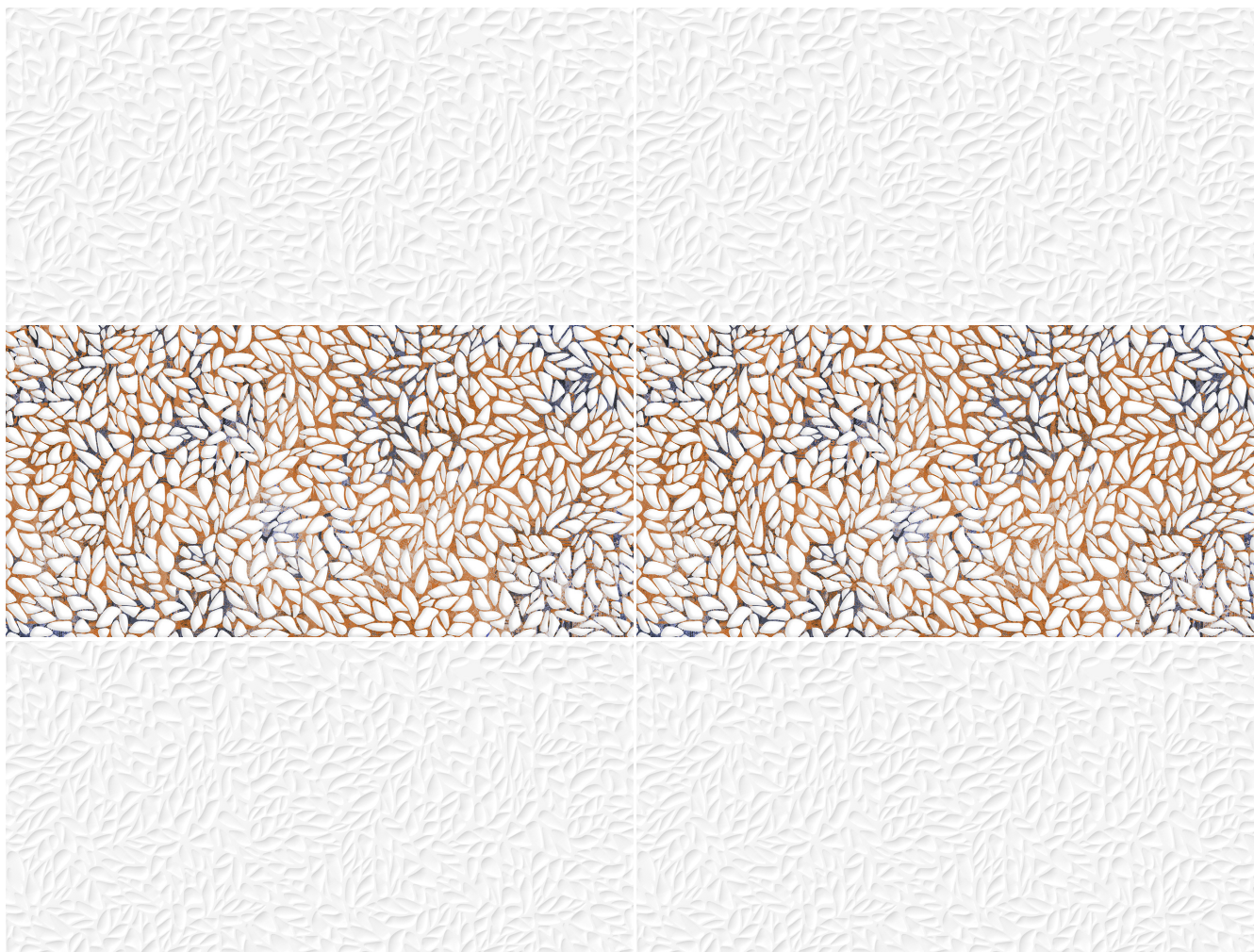
RANDOM





Glossy
SERIES

300 x
600MM



BRAZILIA BROWN 1506

Finish:
Glossy

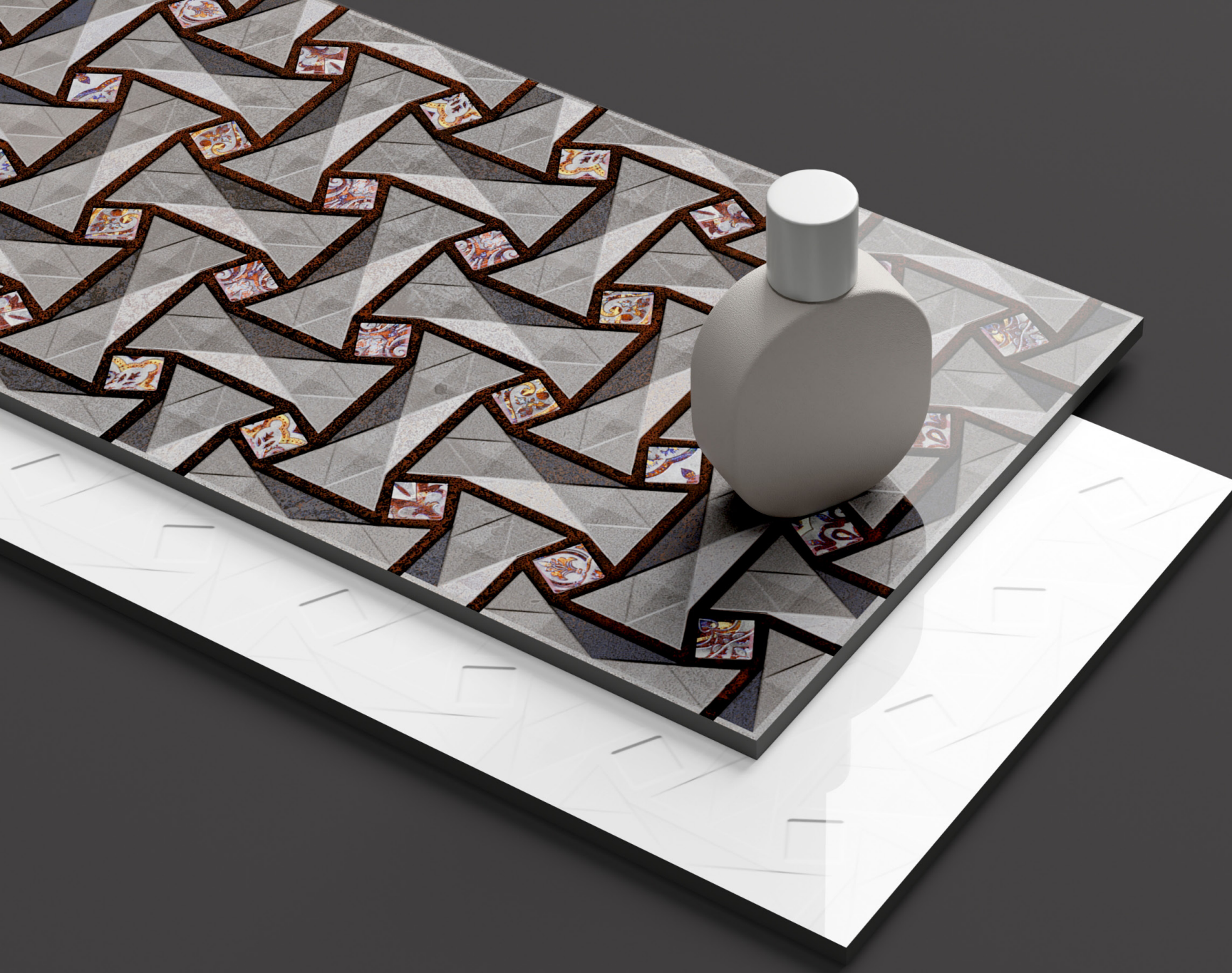
Size:
300 x 600MM

Random:
1 face

BRAZILIA 1506
BRAZILIA BROWN 1506

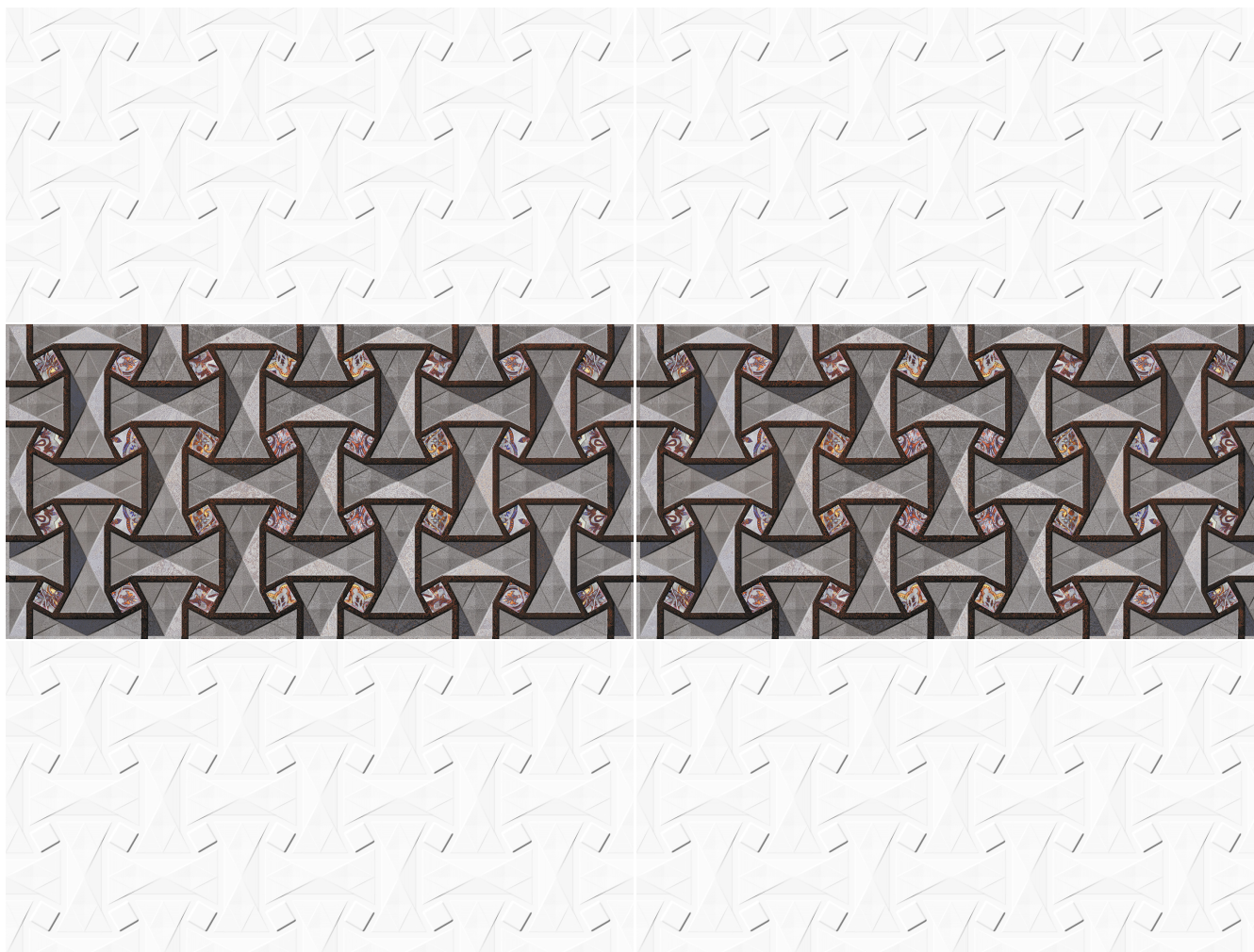
RANDOM





Glossy
SERIES

300 x
600MM



BRAZILIAN 1509

Finish:
Glossy

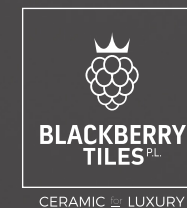
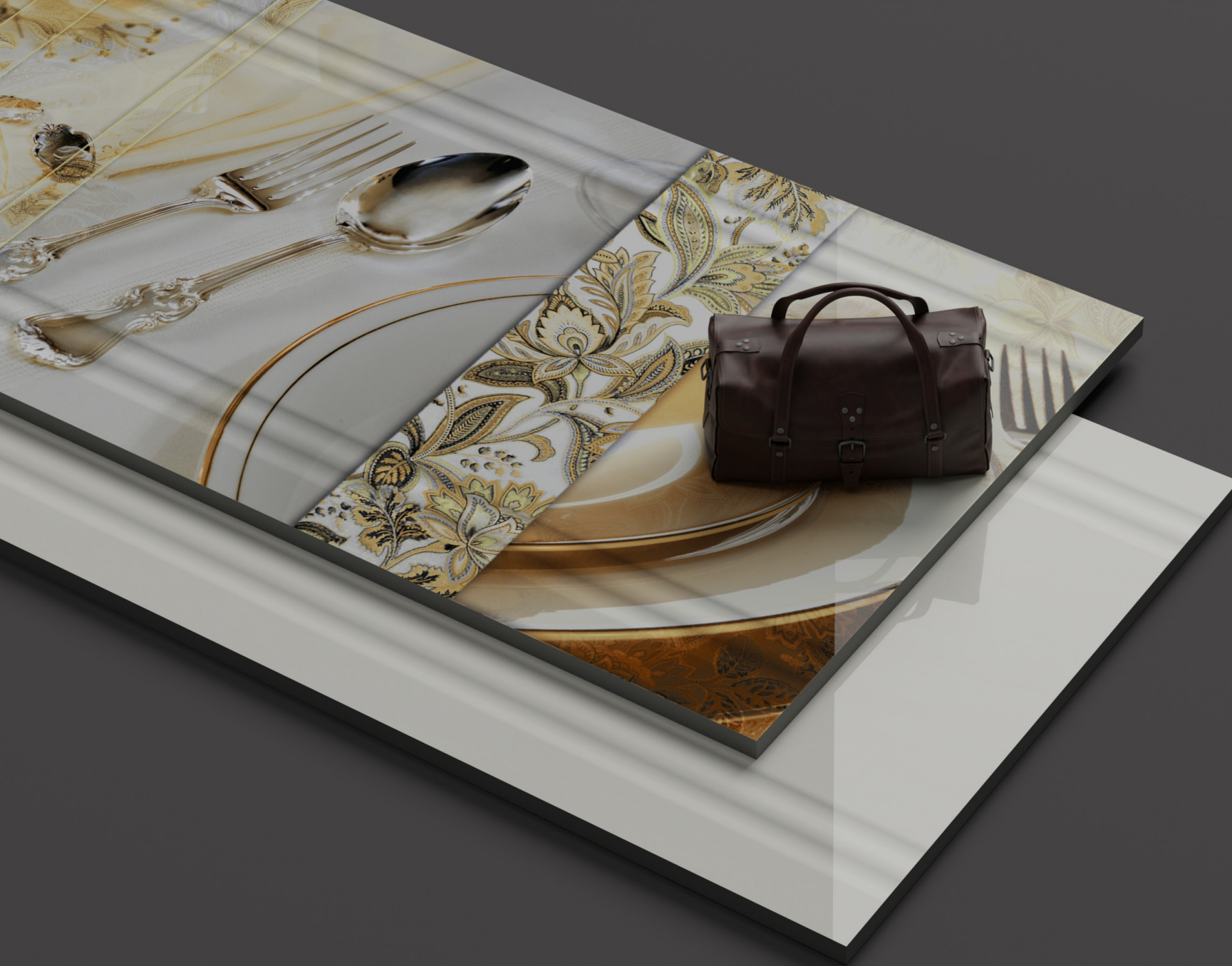
Size:
300 x 600MM

Random:
1 face

BRAZILIAN 1509 LT
BRAZILIAN 1509 HL

RANDOM





Glossy
SERIES

300 x
600MM



CLASSICO IVORY LT
CLASSICO IVORY HL

RANDOM

CLASSICO IVORY

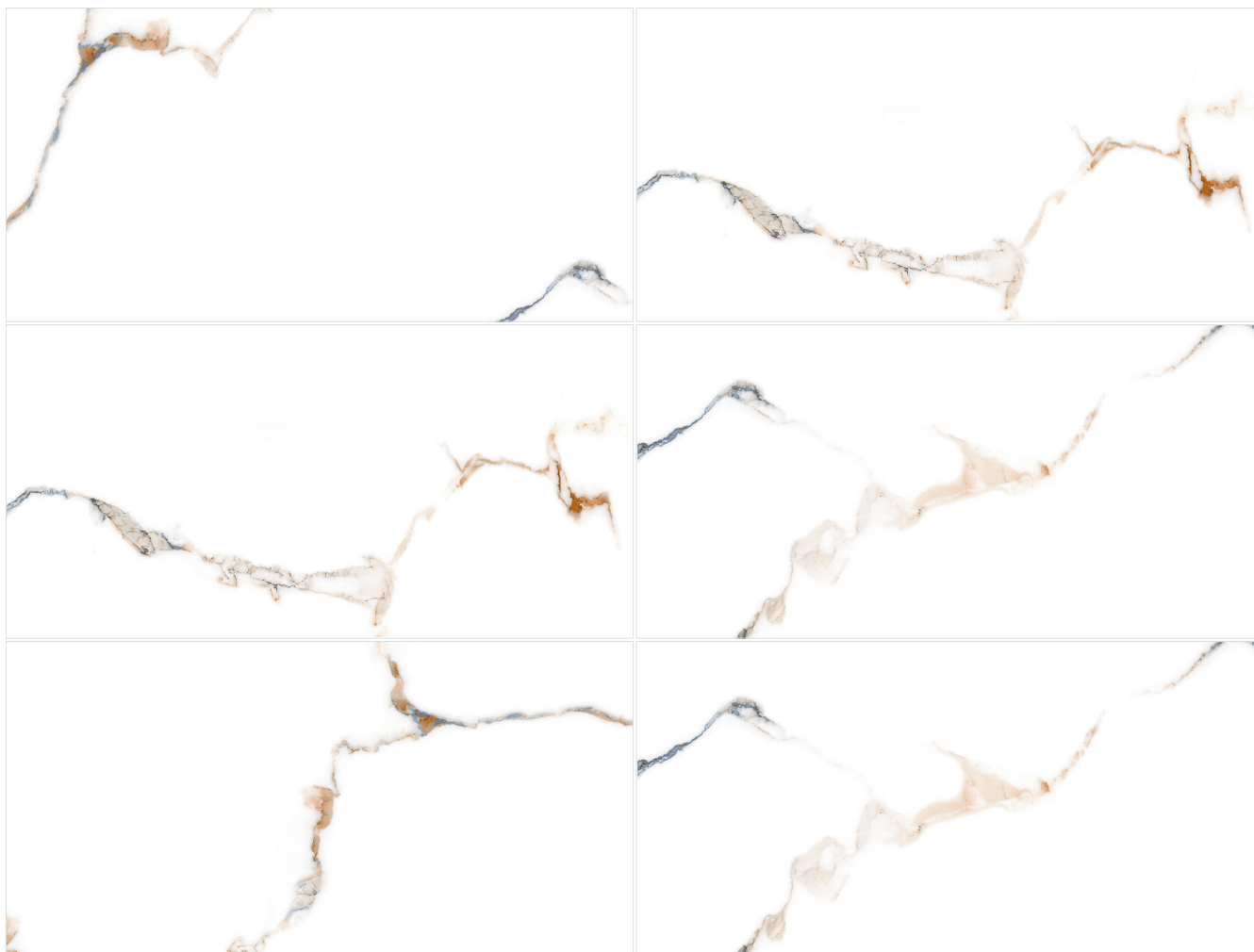
Finish:
Glossy

Size:
300 x 600MM

Random:
1 face







SATVARIO BROWN

RANDOM

SATVARIO BROWN

Finish:
Glossy

Size:
300 x 600MM

Random:
1 face





Glossy
SERIES

300 x
600MM



SATVARIO FABER

Finish:
Glossy

Size:
300 x 600MM

Random:
2 face

SATVARIO FABER 1513 LT
SATVARIO FABER 1513 HL
SATVARIO FABER ICY

RANDOM





Glossy
SERIES

300 x
600MM



SR BL 2005 LT
SR BL 2005 HL A

RANDOM



SR BL 2005 LT
SR BL 2005 HL B

RANDOM

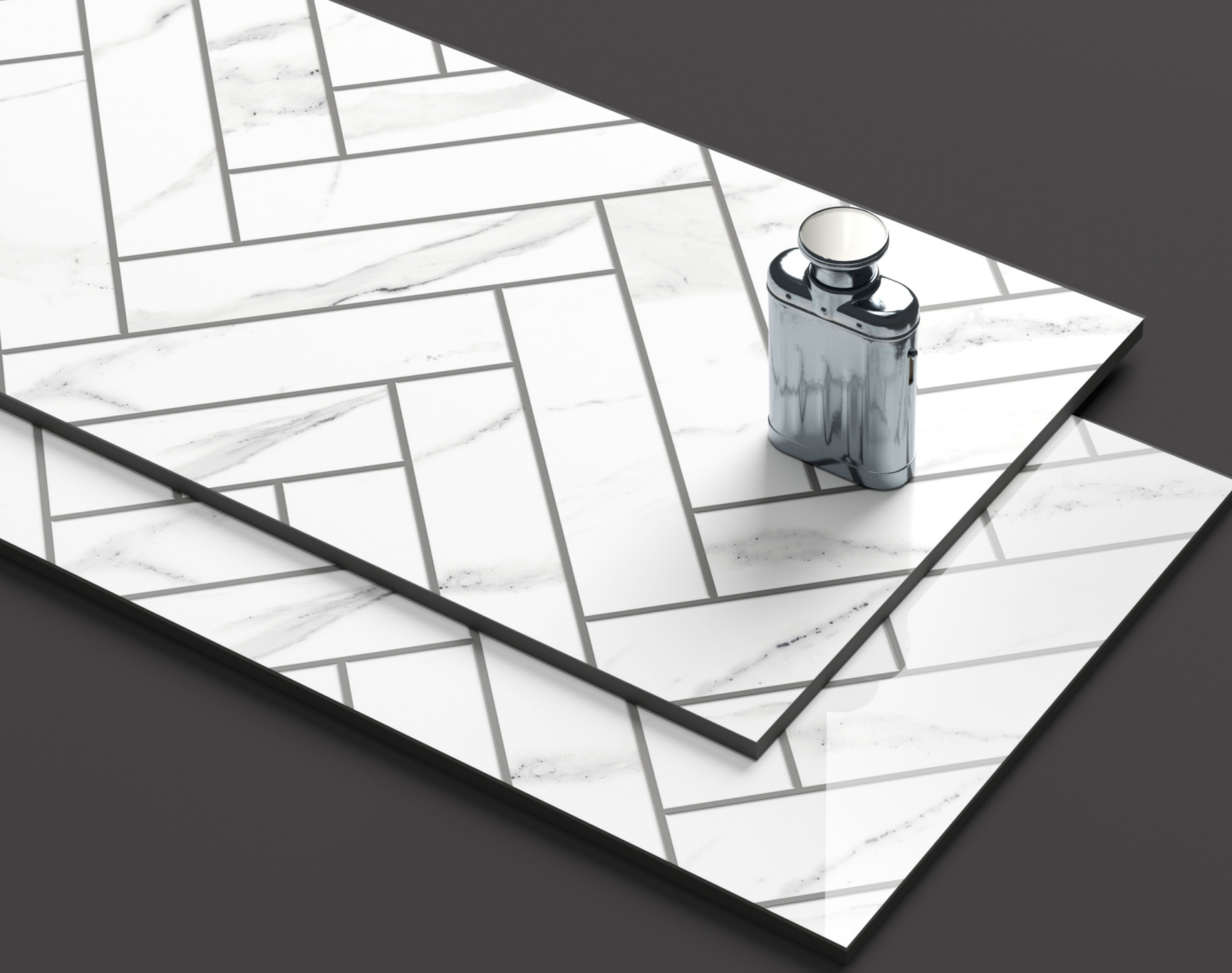
SR BL 2005

Finish:
Glossy

Size:
300 x 600MM

Random:
4 face





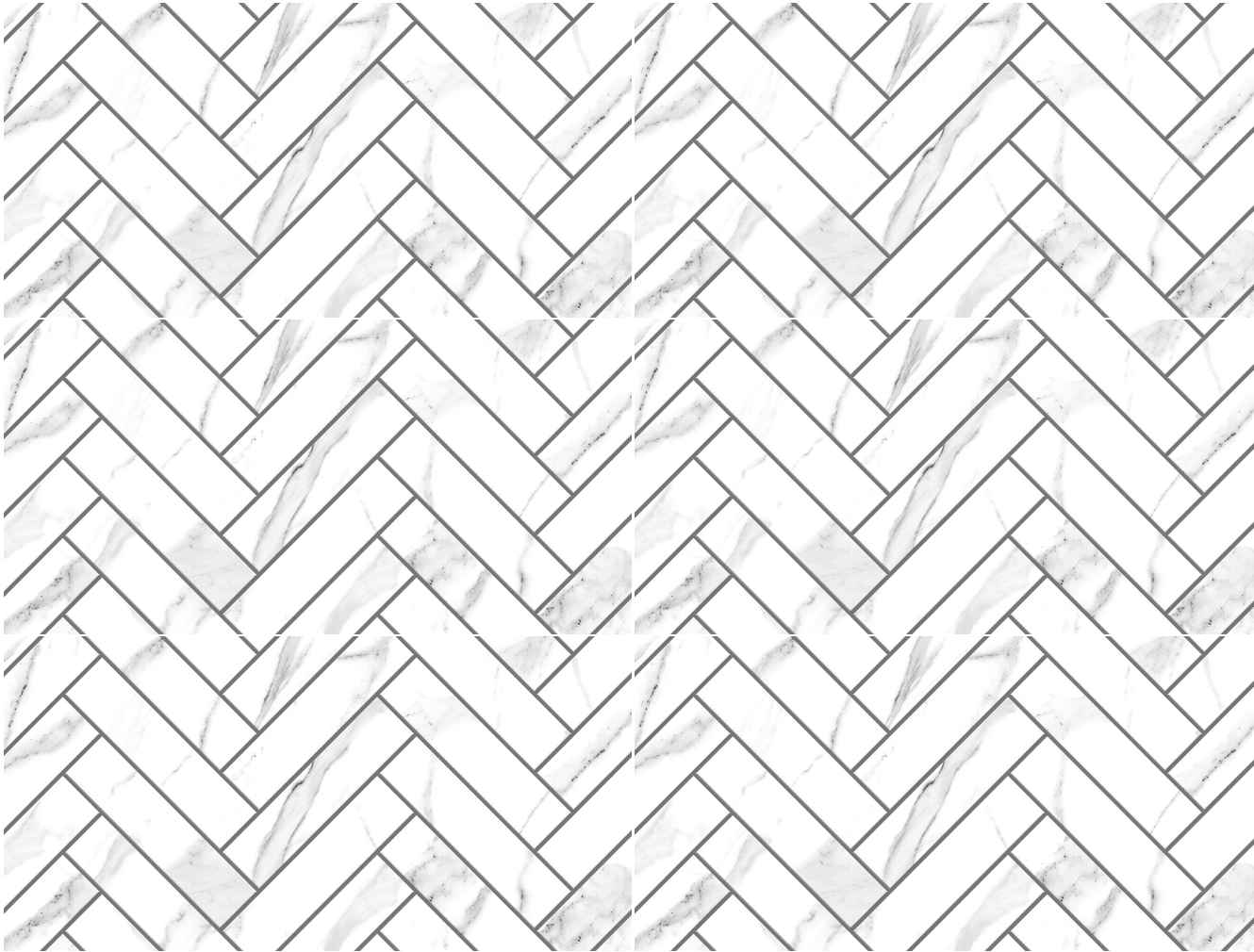
Glossy
SERIES

300 x
600MM

Glossy
SERIES



CERAMIC LUXURY



WONDER COLOR 303

RANDOM

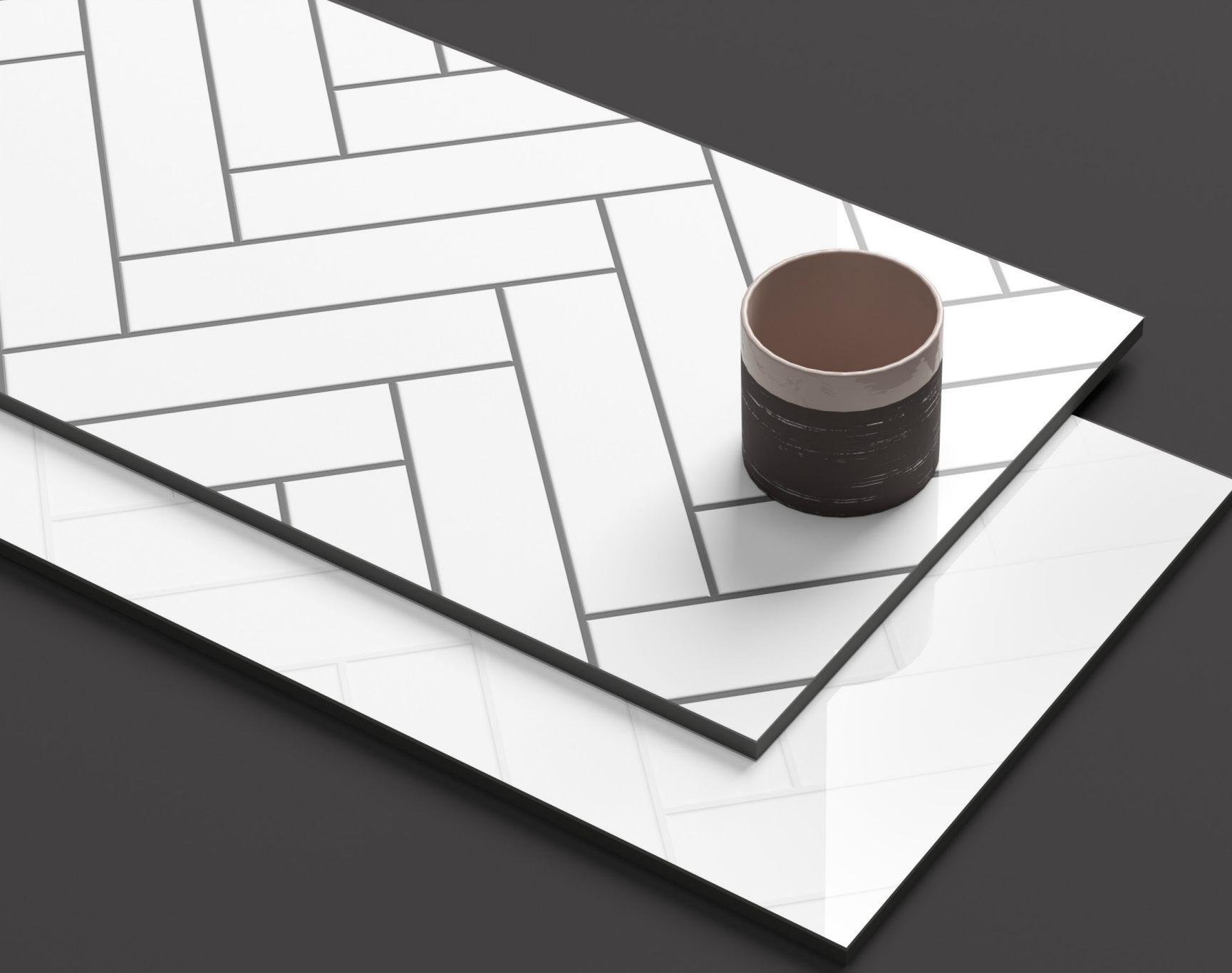
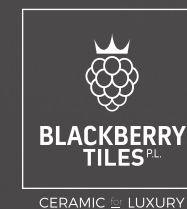
WONDER COLOR 303

Finish:
Glossy

Size:
300 x 600MM

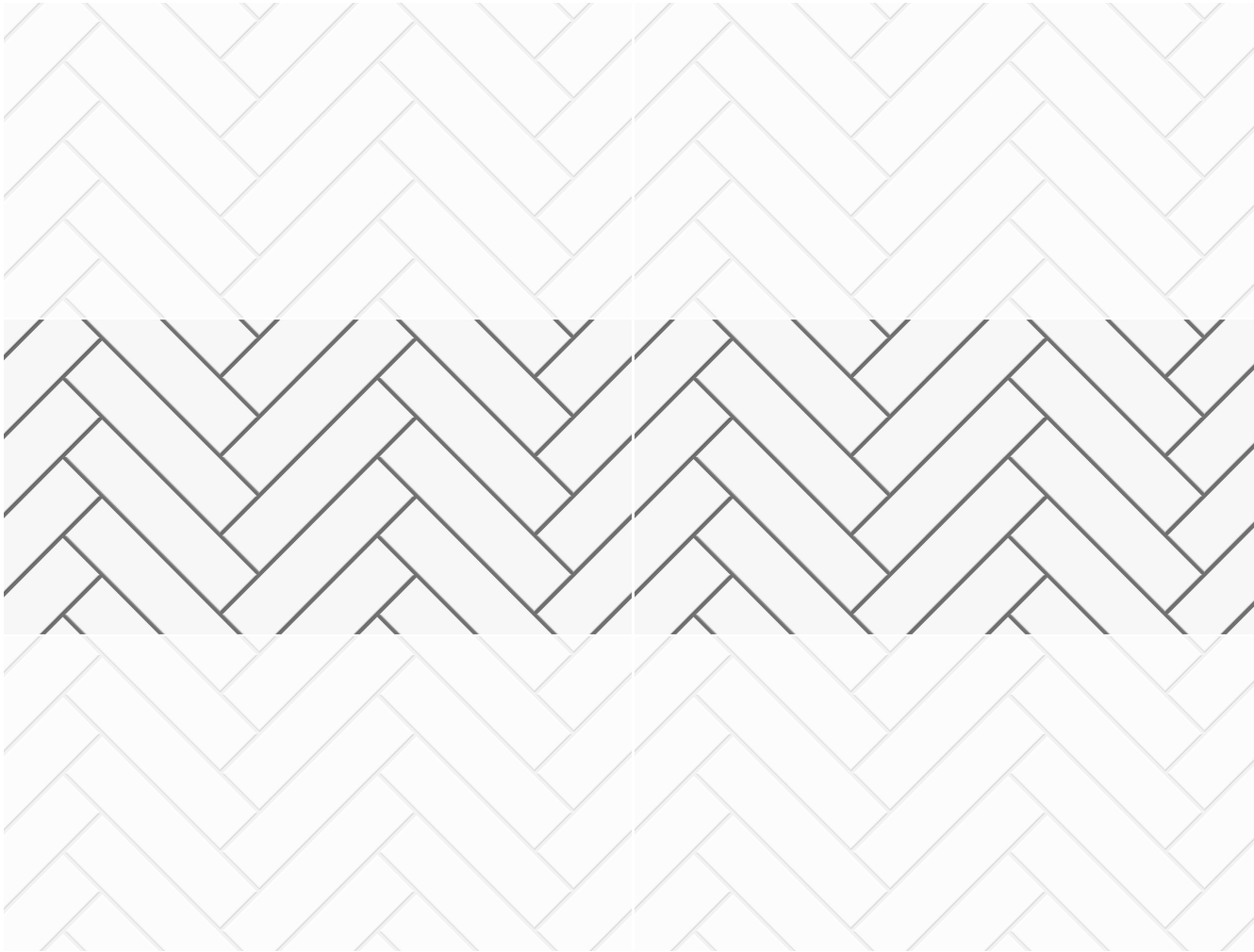
Random:
1 face





Glossy
SERIES

300 x
600MM



WONDER COLOR 302
WONDER COLOR 310

RANDOM

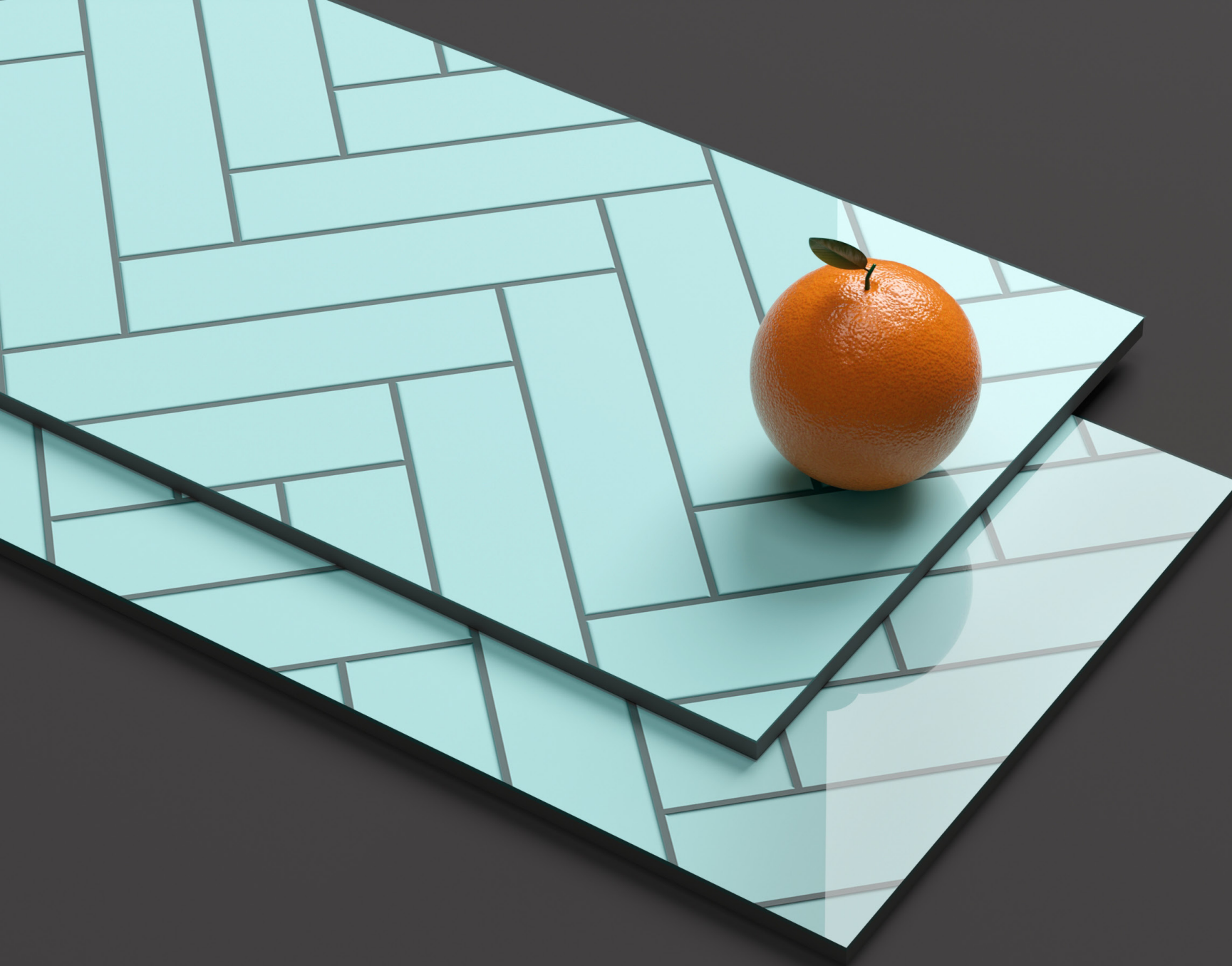
WONDER COLOR 310

Finish:
Glossy

Size:
300 x 600MM

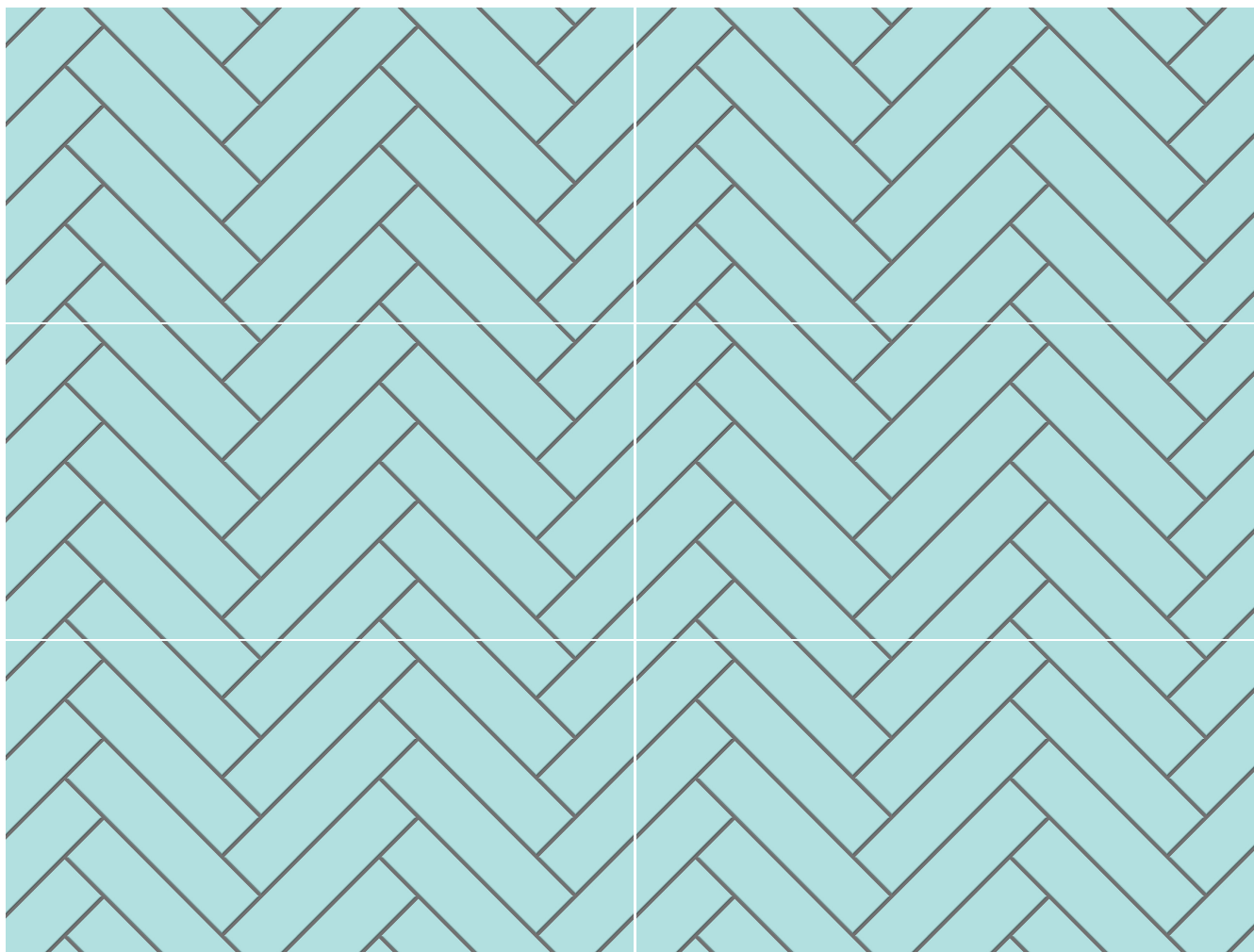
Random:
1 face





Glossy
SERIES

300 x
600MM



WONDER COLOR 312

RANDOM

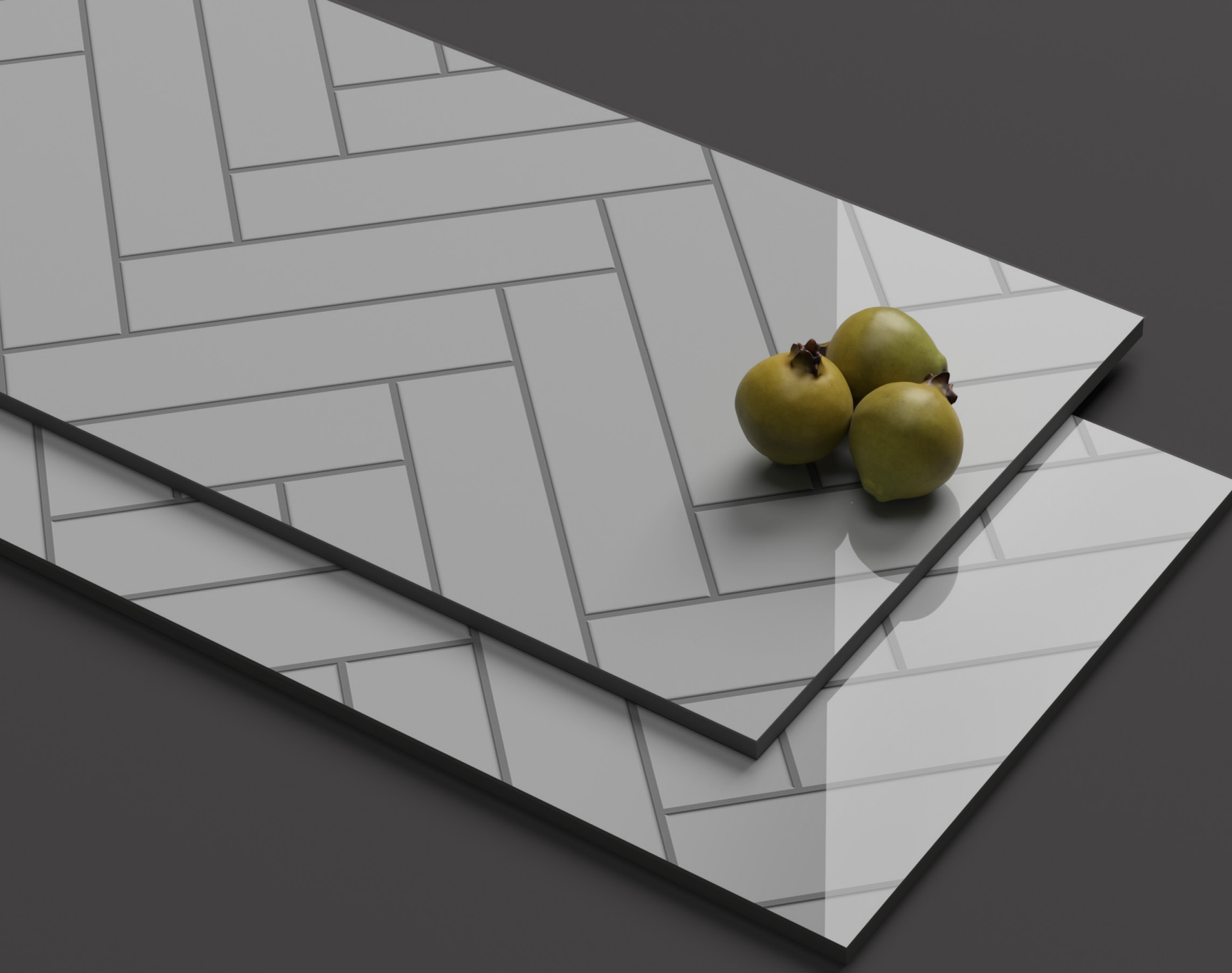
WONDER COLOR 312

Finish:
Glossy

Size:
300 x 600MM

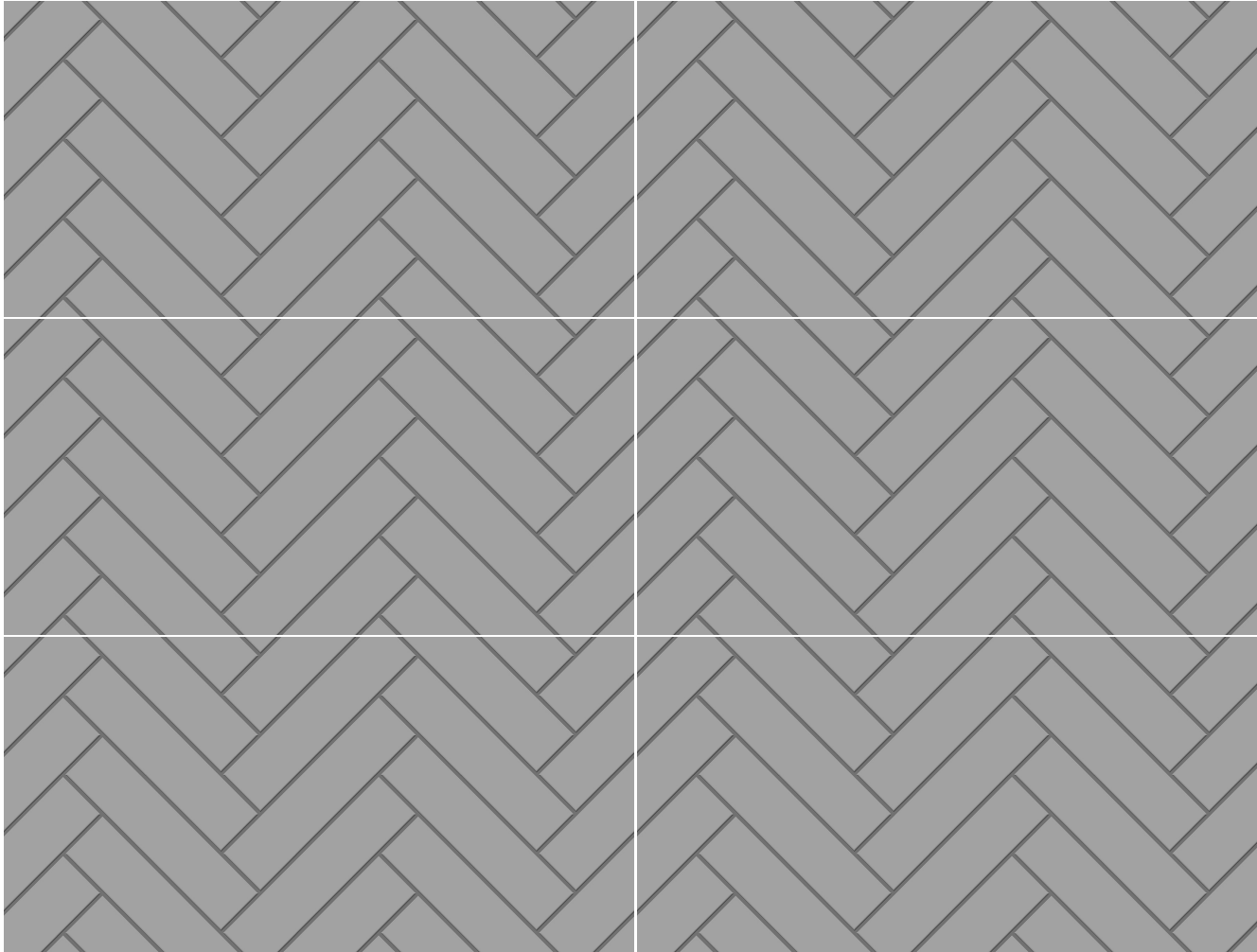
Random:
1 face





Glossy
SERIES

300 x
600MM



WONDER COLOR 321

RANDOM

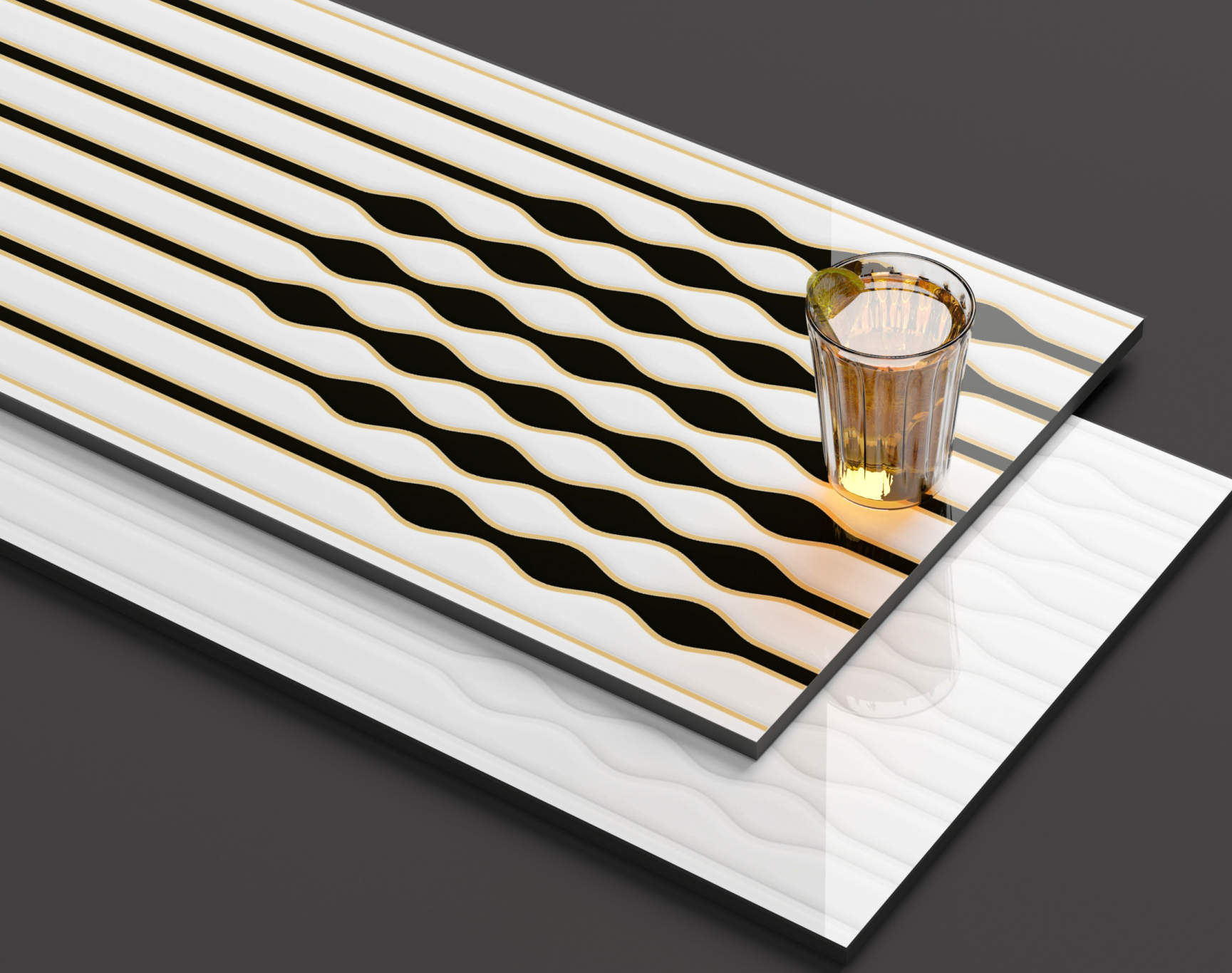
WONDER COLOR 321

Finish:
Glossy

Size:
300 x 600MM

Random:
1 face

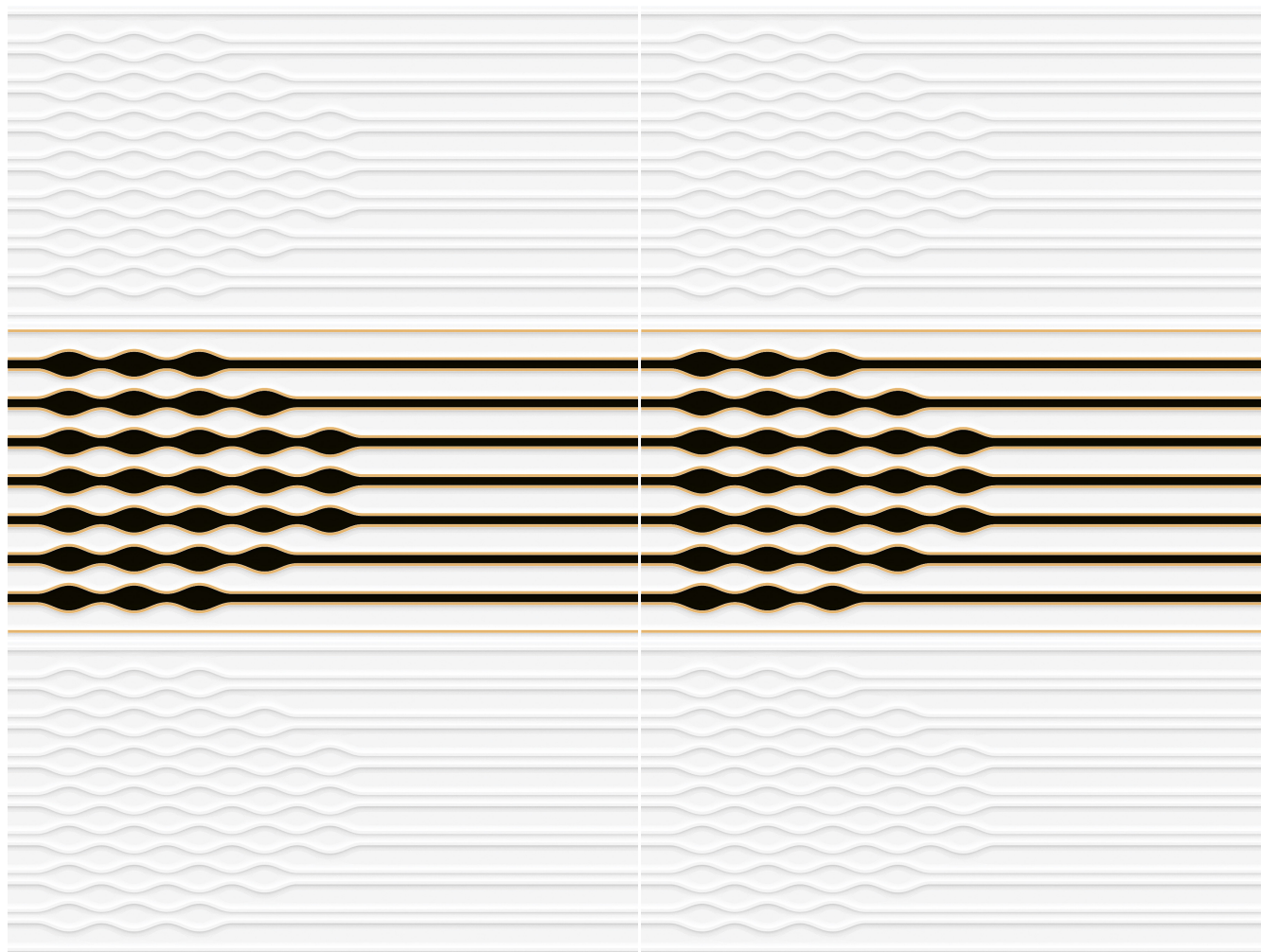




Glossy
SERIES

300 x
600MM

Glossy
SERIES



WONDER COLOR 324
WONDER COLOR 325

RANDOM

WONDER COLOR 325

Finish:
Glossy

Size:
300 x 600MM

Random:
1 face





Glossy
SERIES

300 x
600MM



WONDER WHITE 001

RANDOM

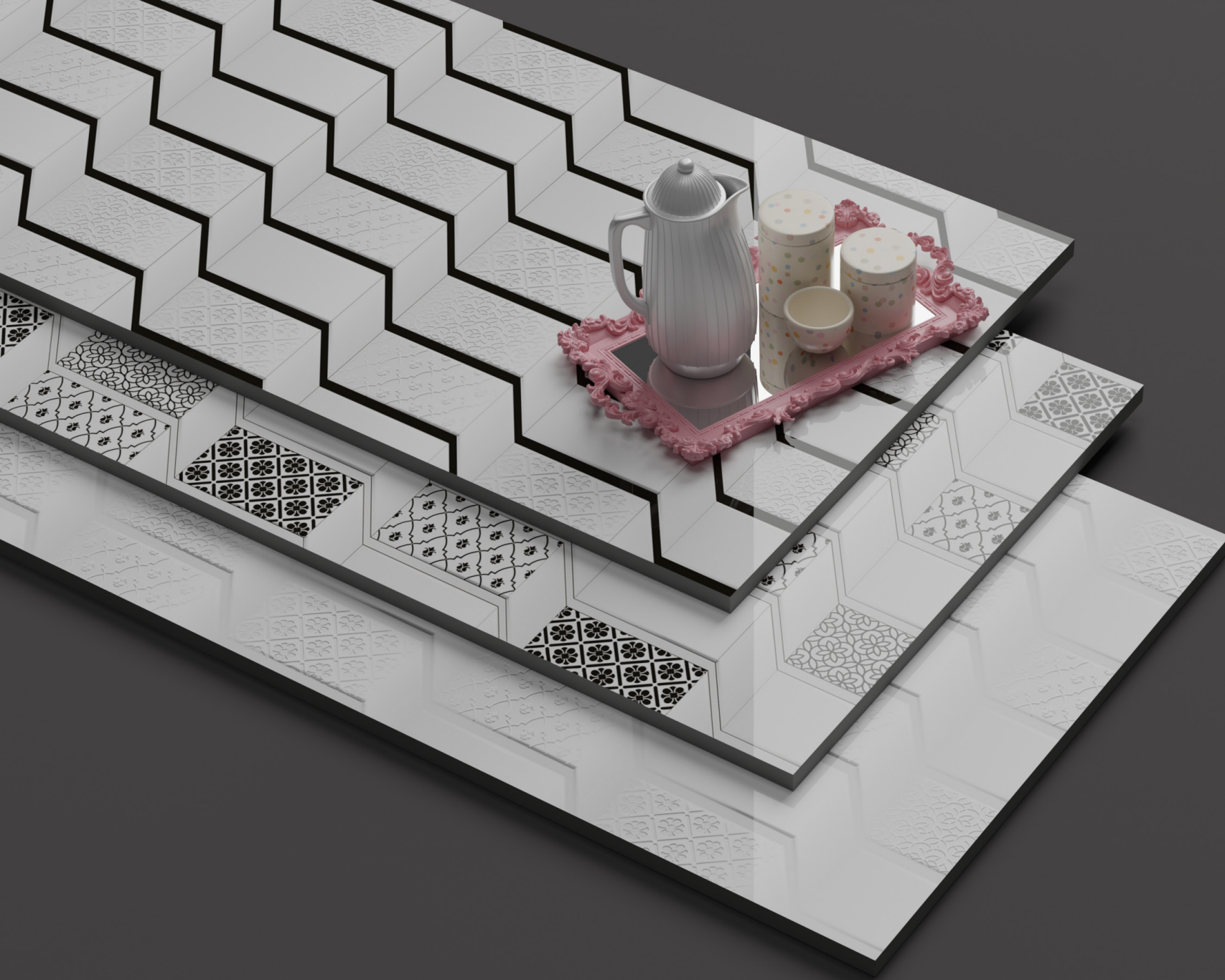
WONDER WHITE 001

Finish:
Glossy

Size:
300 x 600MM

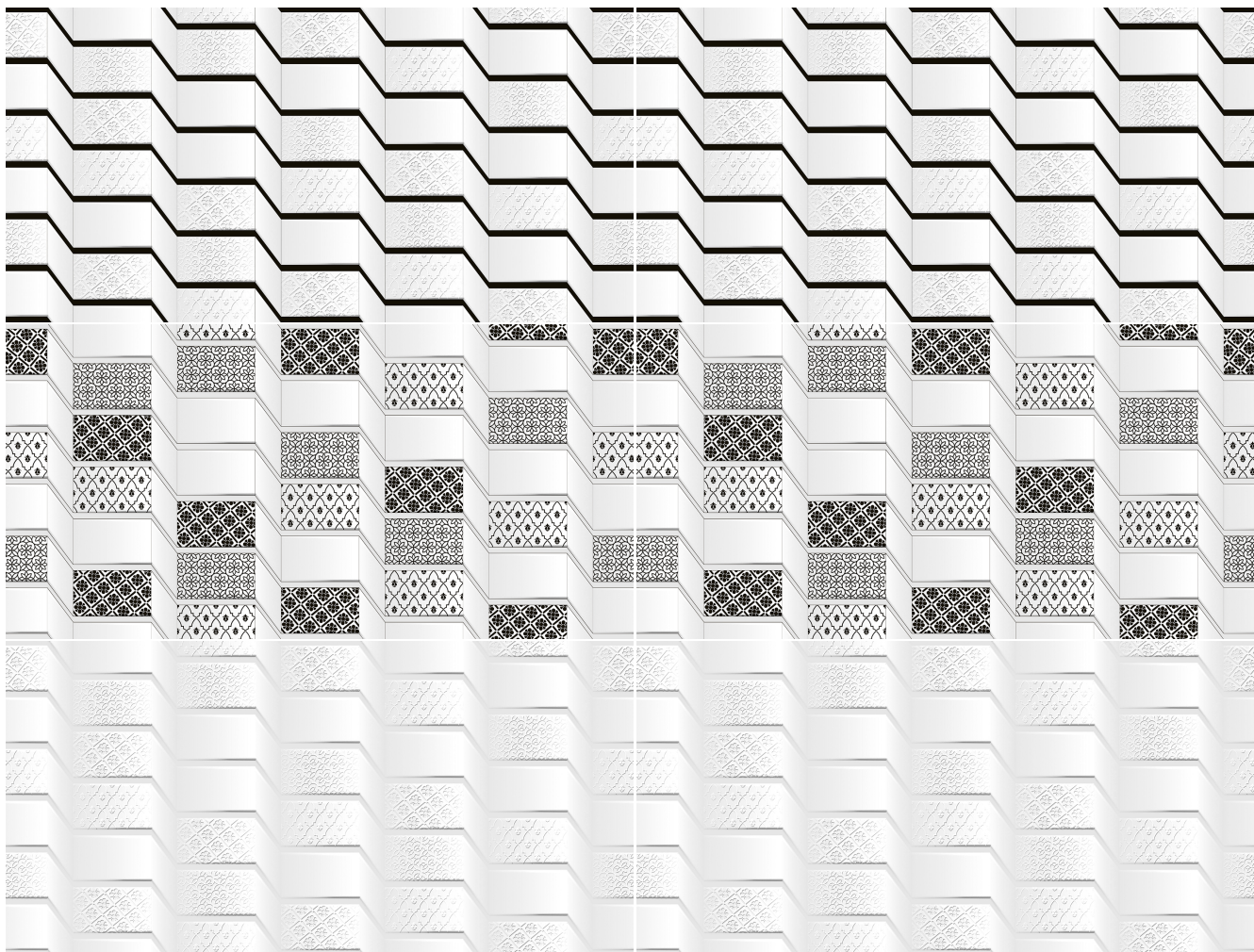
Random:
1 face





Glossy
SERIES

300 x
600MM



WONDER WHITE 005

Finish:
Glossy

Size:
300 x 600MM

Random:
1 face

WONDER WHITE 005
WONDER WHITE 006
WONDER WHITE 007

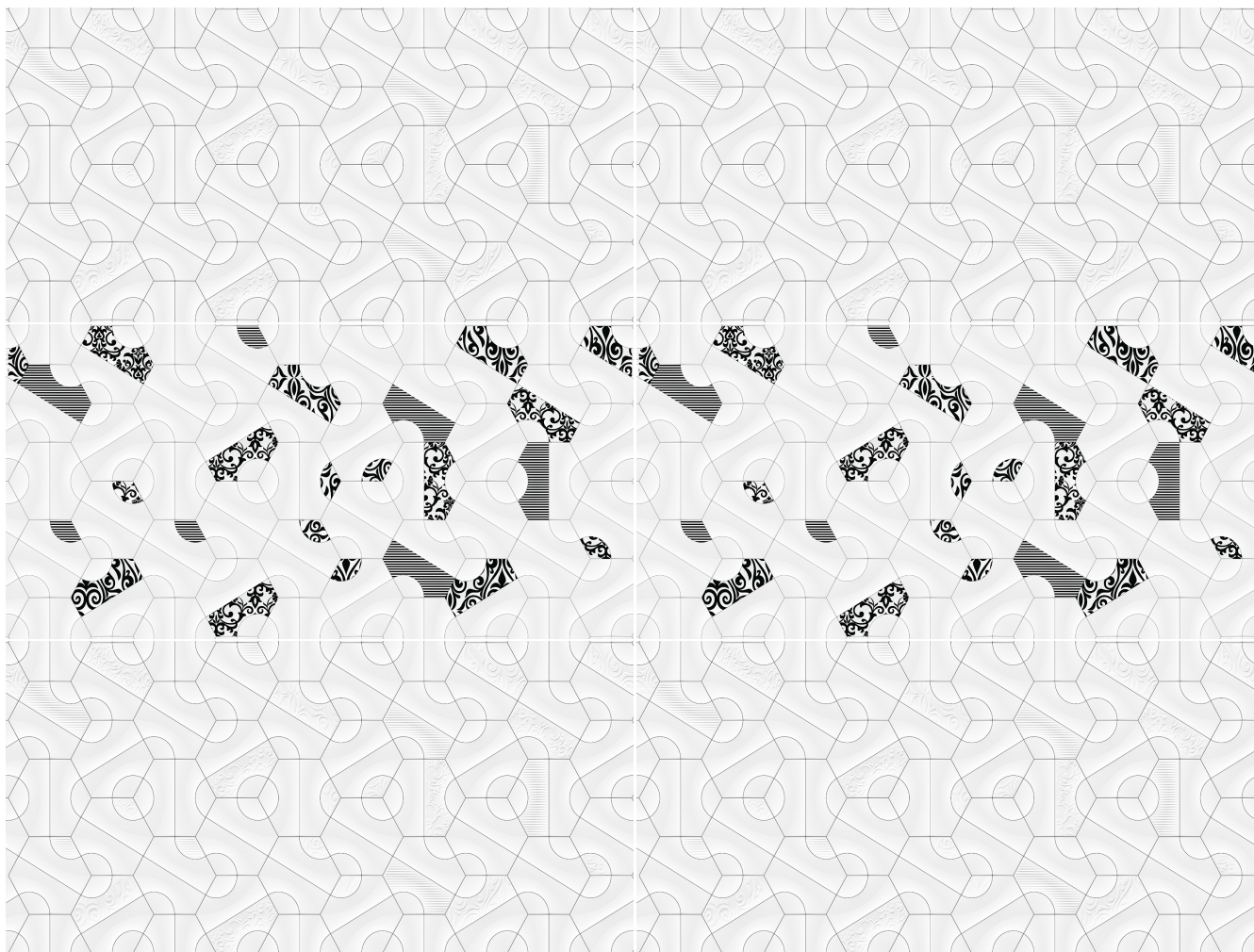
RANDOM





Glossy
SERIES

300 x
600MM



WONDER WHITE 008
WONDER WHITE 009

RANDOM

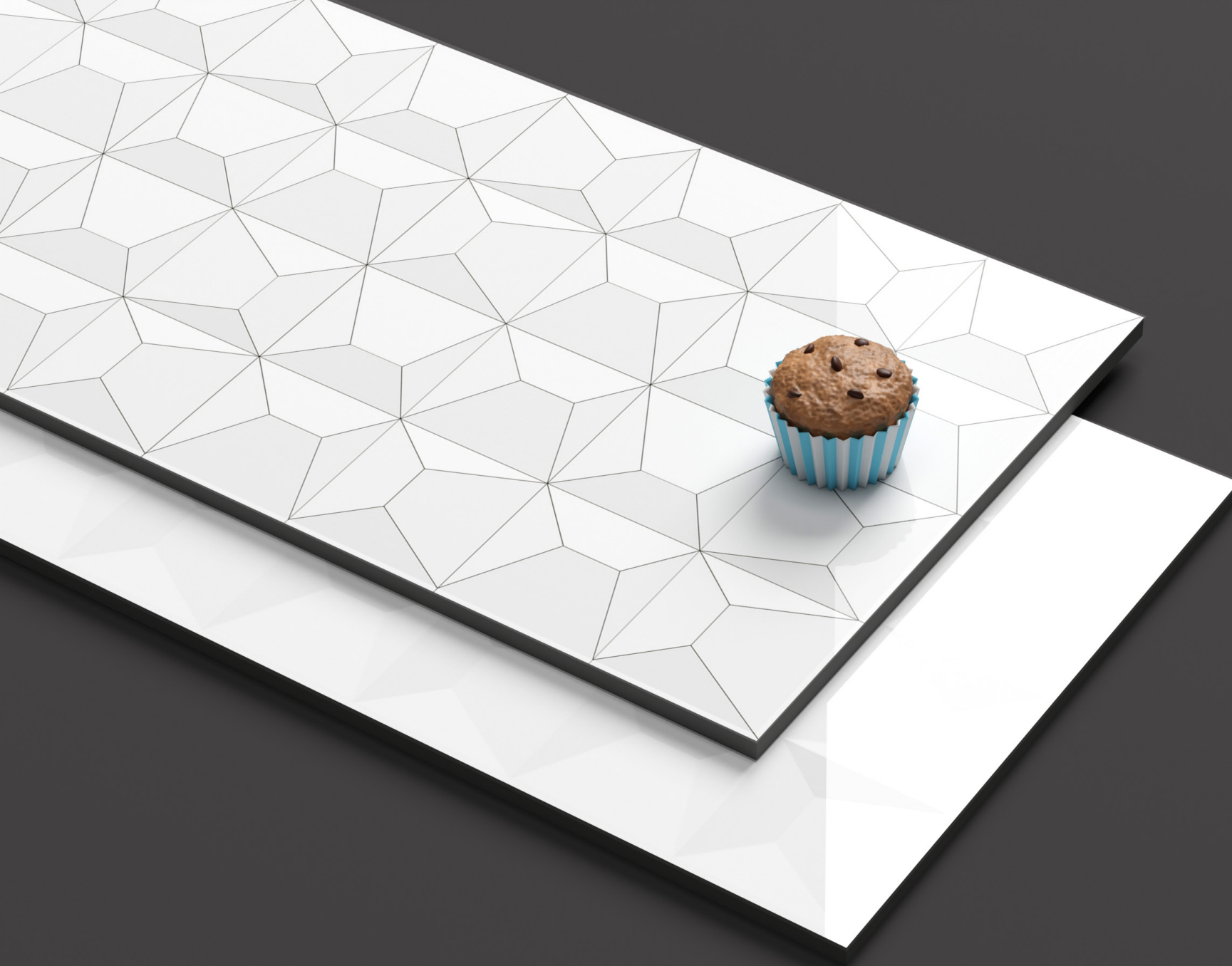
WONDER WHITE 009

Finish:
Glossy

Size:
300 x 600MM

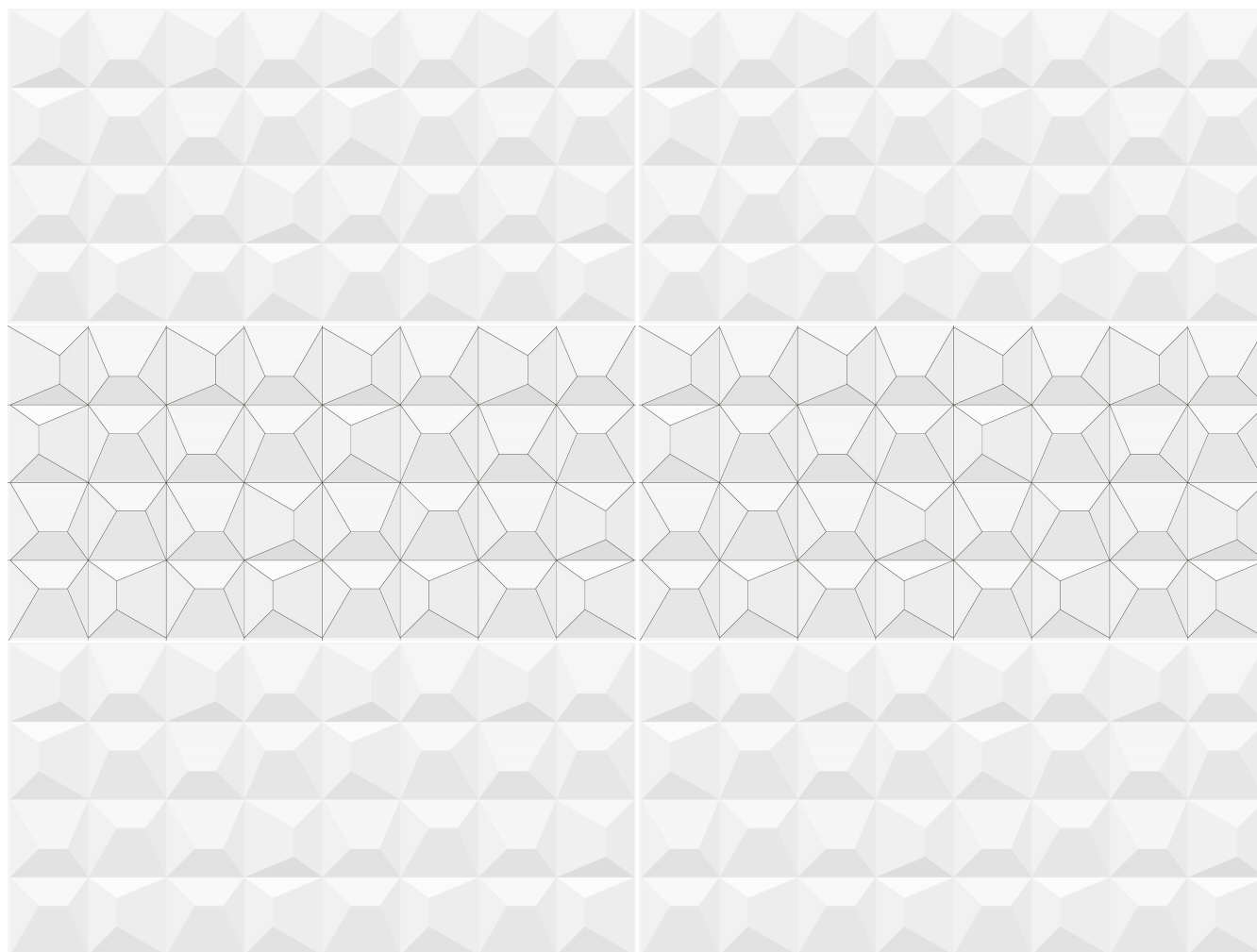
Random:
1 face





Glossy
SERIES

300 x
600MM



WONDER WHITE 017
WONDER WHITE 016

RANDOM

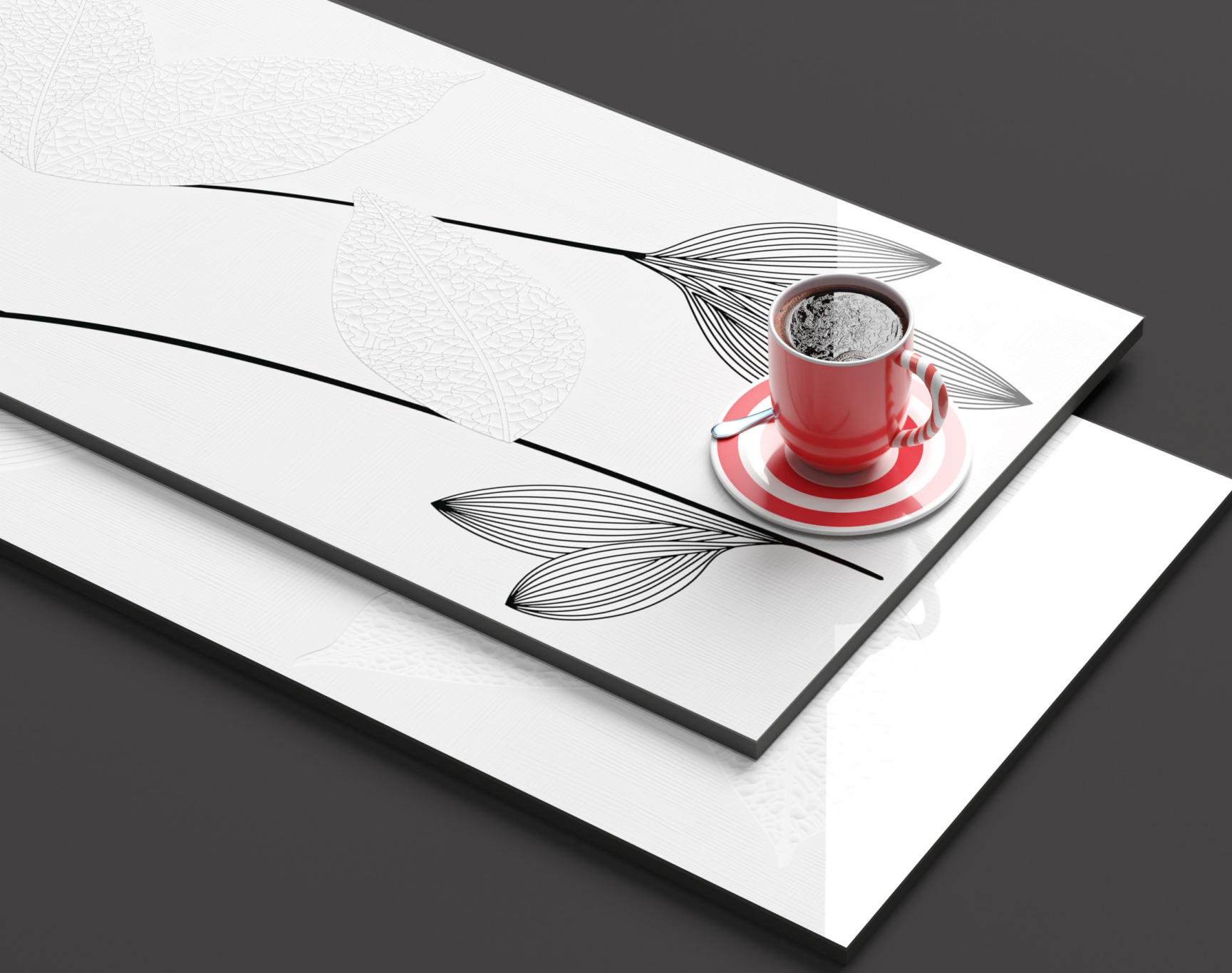
WONDER WHITE 016

Finish:
Glossy

Size:
300 x 600MM

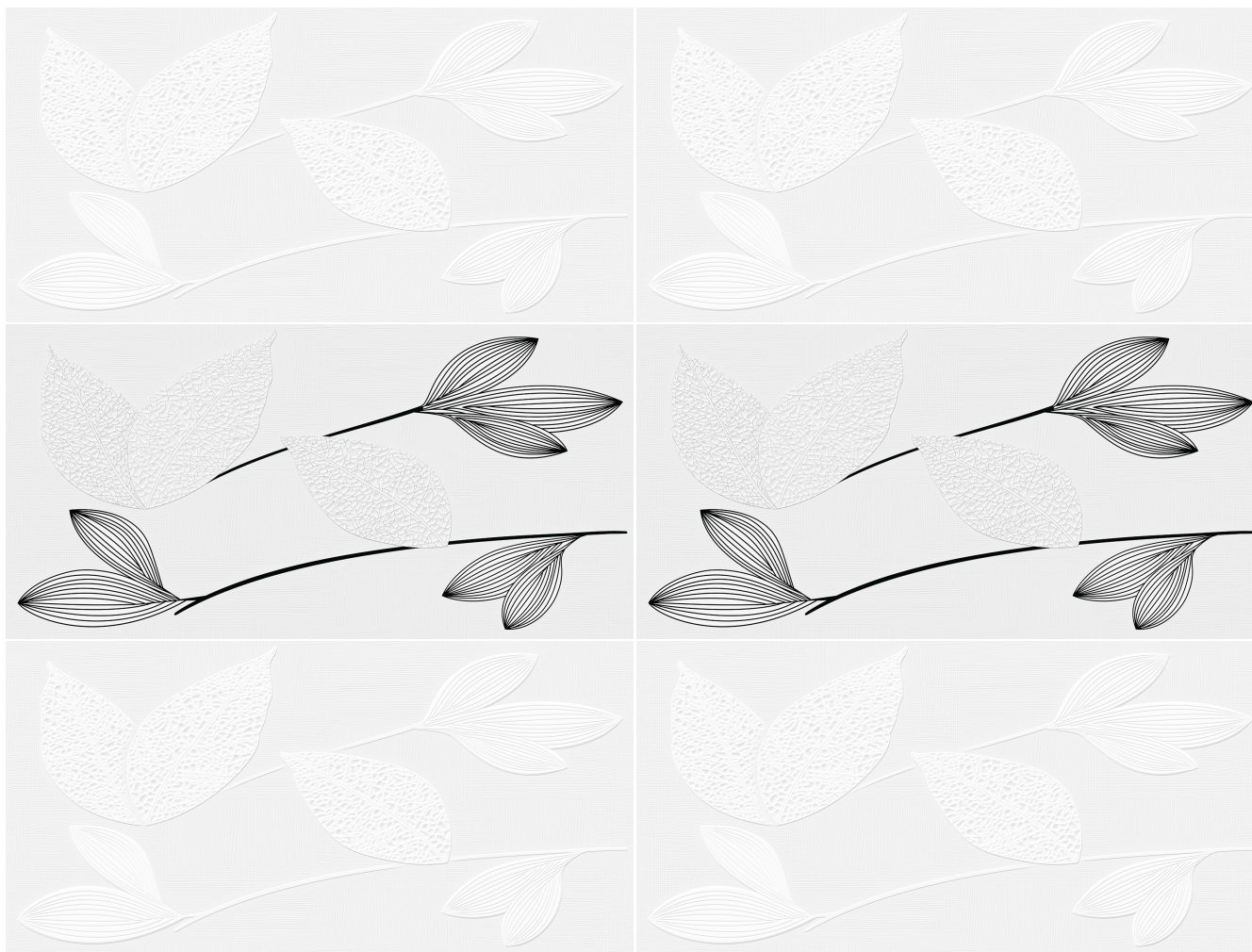
Random:
1 face





Glossy
SERIES

300 x
600MM



WONDER WHITE 018
WONDER WHITE 019

RANDOM

WONDER WHITE 019

Finish:
Glossy

Size:
300 x 600MM

Random:
1 face



Technical Specifications

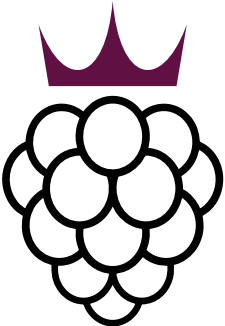
Sr. No.	CHARACTERISTIC	EURO Standard EN-159/IS13759	BLACKBERRY Value
Dimension & Surface Quality			
1	Dimension & Surface Quality	0.5 %	0.4 %
2	Deviation in thickness	0.6 %	0.3 mm
3	Straightness of sides	0.3 %	0.2 %
4	Rectangularity	0.5 %	0.3 %
5	Surface flatness	0.5 %	0.3 %
6	Surface Quality	Min. 95 %	Min. 96 %
Physical Properties			
1	Water Absorption	>0.10%	12-15%
2	Bending Strength	>150 kg./Cm ²	>150-180 kg./Cm ²
3	Scratch Hardness (mohs scale)	Min. 3	Min. 3
4	Crazing Resistance	1 Cycle	No Crazing upto 4 Cycle
Chemical Properties			
1	Staining Resistance	Min. Class 2	Resistant to all Acids and Alkalies & Household Chemical, except Hydro Flouric Acid
2	Impact Resistance	Min. Class B	
Thermo Hydrometric Properties			
1	Thermal Shock Resistance	Resistant 10 Cycle	Conforms
2	Thermal Expansion	Max. 9E-06	Conforms

PACKING DETAILS

NOMINAL SIZE	THICKNESS	NO. OF TILES PER BOX	COVERAGE AREA / BOX	WEIGHT PER BOX
300 x 600 mm	09 mm	5 Pcs.	0.90 Sq. Mtr.	14kg.
300 x 300 mm	09 mm	10 Pcs.	0.90 Sq. Mtr.	14kg.

NOTES: Colour Shown are as accurate as the limitations of the printing process will allow. Prospective customers are advised to inspect a sample of the tile before ordering. Every effort has been made to ensure the accuracy of the information given. However, the company reserve the right of change the specification without prior notice. Sometime variation in shade or size being inherent to ceramic industry may occur. Before fixing, we advise you to follow the fming instructions in the cartons of the tiles as no responsibility can be accepted by the company once the tiles have been fixed

GENERAL NOTE: Any Complaint must be brought to the company's notice within 10 days of purchase & before fixing of tiles.



BLACKBERRY
TILES^{P.L.}

CERAMIC for LUXURY

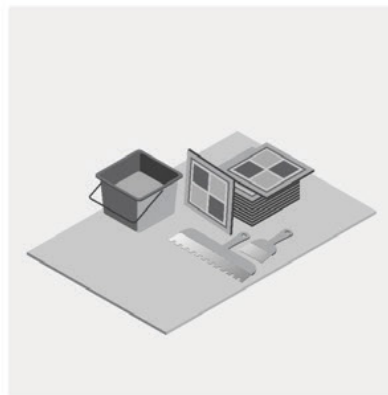


Tiles Fixing Instructions

1. All the tiles must be checked prior to fixing for quality, batch no. and choice.
2. Plaster the surface of the floor to be tiled and allow curing atleast two weeks before tiling.
3. While fixing pick tiles from various boxes alternatively, lay them in the desired patterns and make sure that they give an acceptable blend of colour and design. Please note that shade variation is inherent in manufacturing tiles.
4. For fixing tiles we recommend to use the fixing adhesives or equivalent product for the best result.
5. For fixing tiles in floor using conventional method, we suggest the following laying instruction:
 - A: Use cement and sand mortar in the ratio 1:4. Add water to create a consistent paste.
 - B: Apply 20-25MM of bedding materials over the floor area of 1.0 SQM at a time.
 - C: Apply a thin coat of the slurry on the back of the tile to ensure proper and full bedding. Press gently for even adherence of the tiles with surface.Do not use any heavy materials like iron or hammer to press tile.
- 6: For fixing the tools on Dado, we recommend the use of adhesive or equivalent materials.
- 7: Allow 3-4 days of bed curing after Laying tiles and later fill the joints with grout.
- 8: We recommend maintaining a joint gap of 1-2mm between the tiles to allow possible thermal expansion at later stage.
- 9: Please note that company will not accept any liability in case of any problems arising out of adherence of above fixing instructions.



Step-1
Surface Preparation



Step-2
Preparation of Subgrade



Step-3
Laying of tiles on the Surface



Step-4
Post Tiling Work



Cleaning after Laying

We suggest a good initial cleaning after the laying on the floor or wall, this is very important for removing residual grouting and the normal dirt coming from the building works.

We suggest the use of a cementitious descaler, that is a lightly acid product that doesn't emit fumes that are harmful for the user and that can attack joints. In case of material layed with epoxy or resinous grouting, we recommend to clean after laying with specific detergent.



Regular Maintenance

For a good cleaning of the floor we suggest the use of a natural detergent with a high cleaning power. In case of strong dirty and encrusted by the time, we recommend to consult the following scheme to find the perfect solution to every situation

Recommendations

Drying Process

Once the tiles have been grouted and any excess grout cleaned off, it is important to wait the stipulated time before using the tiled surface; in other words, any cleaning should wait until the tiled surface is completely dry. We recommend waiting 5 days before cleaning in readiness for full use.

Damage Prevention

Measures should also be taken to protect the newly tiled surface against mechanical or chemical damage resulting from subsequent work by other professionals or later installations. Damage can be prevented by covering the floor tiles with thick cardboard or similar material.

Protection from Liquid

The newly tiled surface must be protected from water and damp while the adhesive and grouting materials are maturing and hardening. This is particularly important in outside spaces and areas where there is a risk of freezing.

Cleaning Products

For the final cleaning of the tiled surface, the products used should be compatible with the chemical resistance of the tiles. Avoid solid detergents with abrasive particles and solutions containing hydrofluoric acid, which attacks the glaze and causes irreversible damage to the ceramic tile.

TYPE OF DIRT

Cement, Kalkstein, metal tracer, rust
Residuals, stains and halos of epoxi joints
Grease, tire marks, colours, marker, etc.
Grafitis

PRODUCT

Cementitious descaler
Epoxi descaler
Non soap degrease
Acetone and antigraffiti star

Size-able Showcase

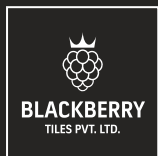


The intricacies of size and design affect the whole outlook and we understand your concern about the size specifications quite well. Also, the design that's uniform and long-lasting has a greater impact on your investment. Choose Blackberry Tiles and you need not worry about anything. Just let us know what you need

1200 X 1800mm	GVT
800 X 1600mm	GVT
600 X 1200mm	GVT
600 X 600mm	GVT
300 X 600mm	CERAMIC WALL TILES
300 X 450mm	CERAMIC WALL TILES
300 X 300mm	CERAMIC WALL TILES / FLOOR TILES



*upcoming



CERAMIC  LUXURY

BLACKBERRY TILES PVT. LTD.

Admin Office

Jetpar Pipli Road, Sapar, Morbi-363642. Gujarat - INDIA

Customer Care No.: +91 90999 86724



Click for visit:
www.blackberrytiles.com

Super Made
in India 